

# ENGAGING OUR VILLAGE



NATIONAL WOMEN'S MUSIC FESTIVAL 2019

CURSULAROMA

# JULY 4-7 • 2019

MARRIOTT MADISON WEST HOTEL AND CONFERENCE CENTER  
MIDDLETON, WISCONSIN • [NWMF.INFO](http://NWMF.INFO)





**It's not too late !**

**Come Home this summer!**  
[www.tlc.org/2019\\_events](http://www.tlc.org/2019_events)



**Become one of the WE**

**Help preserve this healing space.  
Become a recurring donor.**

**Sign up to become a recurring  
donor at the Goldenrod Booth &  
get a free Sister of the Ferns patch!**





# Welcome to the 44<sup>th</sup> National Women's Music Festival



Once again, I have the great pleasure to thank you for spending these four days with us.

The Women in the Arts Board and area coordinators have worked hard over the past year to ensure that you have an excellent experience!

This year's Festival, as always, is a time for us all to celebrate and nurture each other while we enjoy music and art. The festival is also about building a community of women (and men, too; we don't exclude anyone from attending) who come together to share our talents, our stories, our energies, and our knowledge. For a few days we have a space together to simply be ourselves and enjoy who we all are. The National Festival is a place to heal the spirit, to find encouragement, and to empower ourselves and others.

While you're here, we ask that you open your heart and mind to having experiences that may be outside of your comfort level. We realize that there will be women here with very different opinions. In this unique atmosphere, we respect each other. We all listen to one another, talk with one another. We all believe the best of one another.

## This year's Special Events:

- ♦ Due to the generous donations of several women who choose to be anonymous, we are able to bring the award-winning Diva Jazz Orchestra to the SheRocks stage on Sunday afternoon. Diva is immersed in the history of their craft. You don't want to miss this performance.
- ♦ Friday's Spotlight stage will feature members of the National Women's Music Festival Orchestra, with special guest, Valerie Coleman.
- ♦ Lisa Vogel, producer of the Michigan Womyn's Music Festival, and Elvira Kurt will be speaking at 10am. To accommodate the expected crowd, they will be speaking on the SheRocks main stage in Superior.
- ♦ Please note that Saturday's SheRocks stage will start a half-hour earlier than usual at 6:30p and doors will open at 6p.

## You are invited to Dine with an Artist

We have decided to break with tradition this year and not have an Artist Breakfast. In its place, we are hosting **Dine with an Artist**. This special experience in the Marriott Private Dining Room features time with festival artists, a unique menu, and a more intimate setting than the Artist Breakfast. Please check at registration for the dining schedule and availability of seating, and then pay for your reservation. The seating is limited.

**As you may have noticed**, we have named our workshop rooms to honor women from our Herstory. This year, we added two new room names. The Drum Room known as Monona is now been named "Wahru." The room formerly known as Greenway has been named "Gardner-Watkins." Please refer to the hotel map in the back of the program to find their locations.

## We'll be 45 years old in 2020!

Let's make the 45th Festival the best ever. Please tell us what you liked and didn't like at this year's Festival. Who do you want to see on our stages? We will take to heart everything you have to tell us about your experience. Just take a few minutes after you get home to take the survey that you will find on [nwmf.info](http://nwmf.info) and we will take note.

There are many ways you can shape the future of the Festival. You can support us through monetary contributions, by becoming an annual member of Women in the Arts, by becoming a volunteer, by fundraising within your community, and by promoting the Festival in your own

creative way.

To ensure that you don't miss important information about future festivals, you can complete a form at our registration desk or go to our website ([nwmf.info](http://nwmf.info)) to get on our email list, and "LIKE" us on Facebook.

**Now, go out and have an AWESOME festival!**

*Linda Wilson*

President, Board of Directors

Women In The Arts, Inc. / National Women's Music Festival

PS: Word of mouth is the best promotion that you can give to the Festival. Please tell your friends what a great time you had. Encourage them to meet you at the Festival next year!

## You Can Keep It Going!

The days you spend here can make a difference in your life. There are few places in these times where you can explore so many parts of women's music and culture, learn from like-minded women, and meet those whose experiences are unlike yours – all in one place. We know you choose wisely about how to use your financial resources to support organizations and causes you can believe in. Every dollar you donate here makes a difference and keeps this festival going. What a legacy you can help provide for the women of the future! Please take part in one of our fun(d)-raisers here this weekend. Bid in the silent auction and the live auction, treat yourself to dining with an artist or activist you admire, get a quick tarot reading from Gail at registration, and more. You can also stop at Registration to ask about making a monthly donation using a bank card. We appreciate anything and everything you can do!

# Table of Contents

WIA Board President Welcome Letter .....	3
WIA Board of Directors and Staff .....	4
Festival Information .....	5
Thursday Schedule / Workshops .....	7
Friday Schedule / Workshops .....	9
WomenComposersSeries/FridaySpotlight....	10
Saturday Schedule / Workshops .....	13
Sunday Schedule / Workshops .....	15
Artist Profiles .....	18
Workshop Presenter Profiles .....	27
Women in the Arts Awards .....	29
Contributors .....	33
Marketplace .....	34
Marketplace Map .....	36
Festival Map .....	37



## Women in the Arts Board of Directors

Linda Wilson, President ..... Kansas City, MO  
Maria Nasca, Vice President ..... Roselle, IL  
Leslie D. Judd, Treasurer ..... Bloomington, IN  
Mary Spillane, Secretary ..... Omaha, NE

## Festival Staff and Coordinators

Accessibility Coordinator - Rosie Kae - WI  
Artist Liaisons – Beth Kennon - MO  
Artist Liaison & Finance Assistant - Ellen Dugger - MO  
Auctioneer - Diana Cook - IN  
Auctioneer Assistant - Sandy Appleby - IN  
Auctions - Sue Peterson - IL  
Community Housing - Cris Soluna - WI  
Day Programming Manager- Mary Spillane - NE  
Festival Artwork - Urusla Roma - OH  
Festi-wear - Carol Vitelli - FL  
Film Festival – Bettie Owen - CA  
Finance Assistant – Ellen Dugger - MO  
Interpreters - Laura Kolb - PA  
Hotel Liaison - Leslie D. Judd - IN  
Hotel Liaison (On-Site) – Ellen Dugger - MO  
Marketplace Coordinator - Prefest Maria Nasca - IL  
On-Site Carol Vitelli - FL  
Multi-Cultural Women of Color (MC/WOC) Coordinator Wahru Cleveland - OH Assistant - Helene Roussi - OH  
NWMF Orchestra Music Director, Nan Washburn – MI  
On-Site Workshop Coordinator -Terri Worman - IL  
Performer Care Coordinator - Heather West Wilkes  
Performer Care - Shirley Robb - NE  
Molly Wilkes - NE Jennifer Luczynski - NE  
Theresa Lenaghan WI Ana Forte – KS Tami Lea – MO  
Pet Registration Coordinator – Tracy Pearson - IL  
Photographers - Janice Rickert & Carolyn VandeWiele - IN  
Program Design - Linda Wilson - MO  
Program Editors - Nan Brooks – TX & Kaia Skaggs - MI  
Registration Coordinator - Gail Fairfield - IN  
Registration Assistant Coordinators – Raven Girgen - MN  
Starla Lee - MN  
Room of Remembrance Coordinator - Sara Karon - WI  
Spirituality Coordinator- Starla Lee - MN Carol McCollum - WI  
Stage Production Manager - Linda Wilson - MO  
Transportation - Bonnie Zwiebel - WI  
Videographers - Alex Thompson – KS  
Genevieve Johnson - NE Prairie Nyx - IA  
Volunteers/ Work Exchange – Pre-fest Sandi Levermann – NE  
On-site Kelli Sander – MI  
Women Composers Producer Leslie D. Judd - IN  
Women Composers Recitals Coordinator - Sarah Gillespie - WI  
Women Composers Spotlight Stage Coordinator - Kaia Skaggs – MI  
Women Composers Recitals Assistant - Cindy Redman – MI  
Workshop Staff - Julie Sherwood-WI Gail Hirn-WI  
Carol Hwang-Ct

## SheRocks Stage

Stage Manager - Linda Wilson - MO  
Sound Engineer - Colleen Clark - MD  
Lighting Engineer - Root Choyce - TX  
Sound/Stage Crew - Ronda Jean - AR  
Sound/Stage Crew - Janis Kidder - FL  
Sound/Stage Crew - Luanne Adamus - IL  
House Manager - Mary Spillane - NE  
Asst. House Manager - Judy Carroll - NE

## SpotLight Stage

Stage Manager - Retts Scauzillo - NY  
Sound Engineer - PJ Matthews - AR  
Lighting Engineer - Carol Branson - MO  
Sound/Stage Crew - Lynn O'Dell - KS  
Sound/Stage Crew - Mary Waitrovich - WI  
Assistant Stage Manager - Pamela Hess - KS  
House Manager - Elizabeth Andersen - KS

## Living Room

Host - Nancy Scott - TX  
Sound Engineer - Paula 'PJ' Jellis - MI

## Side Stage at SheRocks Stage

Sound Engineer - Kaia Skaggs - MI

## Work Exchange and Volunteers

Amy Steinhardt MN	Kathy Kemnitz - WI
Angela Martin - WI	Kay Ediger - KS
Annemarie Serra - IL	Kelli Rae Tubbs - MN
Barbara Sherwood - NY	Kim Blackhorse - WI
Bev White - NE	Leighe Disbro - IN
Bridget Franks - NE	Linda Power - MO
Catherine Hopkins - MD	Luanne Offenbacher - KY
Colleen Riley - KS	Lyn Davis - BC
Colleen Coughlin - MI	Marge Keller - FL
Dharma Stevenson - IN	Megan Calders - NY
Eileen Hamper - CA	Michelle Erschen - WI
Elain Donnoe - IA	MJ Washburn - WI
Elizabeth Serano - KY	Nan Maloy - NY
Firehawk Stewart - WI	Nancy Greenwald - WI
Harvest Brown - WI	Patricia Lopes - IN
Heather Murphy OH	Patti Kardia - MI
Heidi Forney - WI	Peg Phillips - IL
Holin Blackmoon - WI	Penny Libby - MI
Janice Devening - MO	Porter O'Neill - WI
Jen Perfetti - WI	Rain Gaia Foster - WI
Jenifer Hey - NE	Renate Keilbach - NE
Jennifer Stock - NY	Rose Casey - WI
Jorie Manley - WI	Tessa Nangle - Ontario
Kameron Reed - IA	Thistle Pettersen - WI
Kate Kane - IL	Tina Horth - NY

*Thank You! We wouldn't have a festival  
without your work,*

# Festival Information

## 12-Step Meetings

Please check with the Accessibility Table for information on times and locations of local meetings.

## Accessibility - Rosie Kae

Please do not take flash photographs. Flashes can be a health hazard for some people. To respect the air as a common resource and that many people have chemical sensitivities, use unscented and safer personal care products and do not use perfumes and essential oils while at festival. If you are a person with chemical sensitivity, please use gentle communication techniques to collaborate and solve problems.

ASL interpreters for workshops will be provided on request to the fullest extent possible. Submit your requests at the accessibility counter in the registration area at least two hours before the workshop. Scooter drivers are encouraged to be slow and cautious.

## Women Composers Recitals

Acoustic ensembles and performing women composers are scheduled as background music during lunch and dinner in the Atrium from 4-5:30p Thursday and 11a-12:30p & 4-5:30p Friday and Saturday. Watch for postings and placards in the Atrium for Gardner-Watkins & Atrium Recitals.

## Auctions - Sue Peterson

The Silent Auction will open for viewing and bidding at 12 Noon on Thursday, but will be open to accept donated items starting at 9a daily. The Silent Auction will close on Saturday at 2p when all bids will be final. You can pick up your winning items from 3p to 6p on Saturday or on Sunday at the Festiewear Booth in the Marketplace. The Auction will close daily at 7p and will not be open during the evening concerts. This year everyone who registers will receive a bidding number. This bidding number will be used for both the Silent and Live Auctions.

## Breakfast at the Marriott

If you are wearing a festival armband, you are eligible for the Marriott breakfast buffet in the atrium at the price of \$7.50. If you paid for a room that includes breakfast for two, you will receive breakfast tickets when you check in at the hotel front desk. The atrium is reserved for Festival attendees to meet and share meals, including lunch and dinner. And, of course, networking! You can purchase your meal at the food carts and enjoy it in the atrium.

## Chipotle Fundraiser on Saturday, July 6th Noon-7p

Pick up your coupon at registration. A portion of the money you spend at Chipotle Mexican Grill, 8422 Old Sauk Road, Middleton; will be donated to the festival. Make sure to mention at checkout or bring the coupon. Fundraiser for National Women's Music Festival

## Dogs/Pets - Tracy Pearson

We want the National Women's Music Festival to be a safe and enjoyable experience for everyone. When bringing your pet to the festival please remember that not everyone is a pet lover. Some people have a fear of dogs. We welcome our four legged friends, but sometimes they act like, well, animals, so we have the following policy: If any dog, including a service dog, exhibits behavior that is disruptive to others, such as barking, whining, jumping, urinating indoors or snapping, the owner is required to bring the dog under control immediately. This also goes for any other pet's behavior that may be considered disruptive to others. If your pet or service animal's behavior continues, you must remove the animal from the setting for the duration of the concert, workshop, meeting, etc.

All pets and service dogs must be registered by their human at the hotel front desk to obtain a sign for their room and at festival registration so that we can help find a lost pet. Please see our full Pet Policy at [nwmf.info](http://nwmf.info).

## Emerging Artist Contest

Over the past 43 years, Women in the Arts has hosted contests for new and emerging artists. The winner of the contest receives a main stage set at the next year's festival. The purpose of this contest is to find women artists who will carry on the traditions of women's/Lesbian music and culture—music and spoken word performance that is written and performed by women for women—the culture that speaks to our lives. We hope these artists are welcomed on the women's music circuit and nurtured by the women's community.

**Nia and Ness**, the 2017 winners, are coordinators of the Emerging Artist Contest. They engage in the search for new artists and encourage submissions, and help the board screen applicants. During the festival they meet with contestants to advise and cheer them all the way through the announcement of contest results on Sunday afternoon.

**e. nina jay** describes herself as “a Black, Lesbian, woman, writer who uses poetry as a tool of survival and to break silences around all forms of violence against gurls and womyn with particular focus on the intersections of race, sexuality, and poverty. She says, “... I believe womyn and gurls can create a powerful community to fight against the violence and constant degradation that weaves itself into every facet of our lives, by breaking silences and unraveling shame.” She has a new feature-length film, *body of rooms*, in which she performs poetry and spoken word from her book of the same name. [facebook.com/e.nina.jay](https://facebook.com/e.nina.jay)

**Mother's Daughter** is the duo Jessie Standafer and Alexa Blair Wilkinson, whose music blends old timey guitar riffs with electronic elements and rich vocal harmonies. Their writing style reflects on the past so that they might create the future s they connect past to present, matter to spirit, and tradition to progress. As solo artists, they have performed all over the U.S. They recently performed at the Big Alice Barrel Room, a New York queer performance space, in a benefit for a center that helps protect LGBT homeless youth. [facebook.com/Mother's Daughter Band](https://facebook.com/Mother's%20Daughter%20Band)

## Festival Choruses

We have three festival-long workshops which end with the participants performing on the SheRocks stage on Sunday morning. They are the Women's Drum Chorus, directed by Wahru with Rani Biffle-Quimba, the Women's Ukulele Chorus directed by Jori Costello, and the Women's Vocal Chorus directed by Renée Janski. See Workshop Schedules for more information.

## Game Room

Come play some indoor games! We have Jenga with Women's History Trivia, the Harriet Tubman board game, DYKE Trivia and coloring books and puzzles. Bring some friends and make some new ones in friendly competition.

## Geocaching at National Women's Music Festival

Have fun, earn chances to win a 2020 festival pass, and support NWMF through geocaching! Follow the map and your smartphone to find the hidden treasures located in the hotel, on the grounds, and at local participating festival sponsors, and be entered for each find into a drawing for a 2020 festival pass! The more caches you find, the more chances you have to win! The NWMF geocache map/

## Festival Information

coordinates will be available for registered geocache participants beginning at noon on Thursday, July 4th, and the search will close at noon on July 7th. The minimum suggested donation for participating in this fundraising event is \$15. For more information about the global geocaching phenomenon, look on the Whova app or nwmf.info.

### Lost and Found

If you find something, please drop it off at the registration desk. If you have lost something, that is the first place to check. Lost and found items will be posted on the Whova app throughout the day. If you discover that you have lost something after you leave the festival, contact Mary at nwmfhouse@gmail.com. If the item has been found, we will send it to you.

### Multi-Cultural/Women of Color Series – Wahru and Helene Roussi

The Multicultural/Women of Color Series focuses on inclusivity, inviting multicultural women, women of color, their friends, allies and partners to come together in a series celebrating diversity through listening to, participating in, and supporting each other's unique talents and gifts. Everyone is welcome to participate and experience women's music from the diverse perspectives of our rich cultural heritages.

### MultiCultural Women and Women of Color Reception and Dinner

All women are invited to join their sisters of color on Saturday for an informal dinner, conversation, and maybe dancing! This is an opportunity to make new friends, celebrate women of color, and create alliances for sisterly persistence for social justice. Look for information on tables in the Atrium about how to order dinner. There will be an open-mic after the conversation.

### Open Mic/Jam with Nancy Scott

Artists and attendees meet and play together in the Living Room after the SheRocks concerts. Open Mics are scheduled for Friday and Saturday days. The Living Room is a place to hang out and relax in the back of the Marketplace.

### Storytelling with Jamie Mayo

Jamie will be sharing stories in the Living Room. If you attend her workshops, you will have an opportunity to share your stories.

### Singing in the Atrium

Please join Crys Matthews in singing her powerful song, "The Only Way Out" on Saturday morning at 8:30. You can pick up a copy of the lyrics at the Festival Registration desk.

# Whova

Everything you want to know about the festival is on the Whova App.

Learn about artists, schedules, workshops, and Marketplace vendors. Connect with other festie-goers and post photos. If you didn't receive the invitation from us, go to your app store and download the Whova App. After downloading, create an account and login.

## Food Cart Schedule

Located outside  
Conference Center Entrance

**Caracus Empananas**-flour based dough filled & fried

**Jakarta Cafe**-BBQ & home made iced cream

**Jolly Frog**-Mexican food

**Kakilima**-Indonesian food

**Sazon**-Puerto Rican Fusion

**Soho Gourmet Cuisines**-Asian fusion

**Ugly Apple Cafe**-frittatas, salads, vegan, and gluten free options

**Thursday, July 4**  
12p-7p - Sazon

**Friday, July 5**  
10a-2p - Ugly Apple Café  
11a-7p - Soho Cuisines  
11a-8p - Jakarta Cafe  
4-8p - Caracus Empananas

**Saturday, July 6**  
11a-2p - Soho Cuisines  
11a-8p - Jakarta Cafe  
3-7p - Caracus Empananas

**Sunday, July 8**  
10a-4p - Jolly Frog  
11a-4p - Jakarta Cafe

Support Women in the Arts, Inc., Producers of the  
National Women's Music Festival

**Your "Will" Can Provide A Legacy for the Future of Women's Culture**

Making a gift to WIA/NWMF in your will is a simple way to support the festival and leave a legacy for women in the future. Please consult your attorney to write or update your will and use the following information:

Women in the Arts/National Women's Music Festival, a nonprofit corporation, operating under the laws of the State of Indiana, with a principal address of PO Box 1427, 125 W. South Street, Indianapolis, Indiana 46206-1427 Federal ID# 31-1053482; not-for profit registration #: NFP 731202-04.

**amazon smile**  
You shop. Amazon gives.

**You shop. Amazon gives.**

Amazon donates 0.5% of the price of your eligible AmazonSmile purchases to the charitable organization of your choice.

If you shop Amazon, you can support Women In the Arts, National Women's Music Festival by starting your shopping at smile.amazon.com





# Thursday Schedule



(Key: Time-Event-Room) All Stage Houses open 1/2 hour prior to start of stage (unless otherwise stated.)  
Names in parentheses throughout the program are the names of the interpreters for the Deaf.

## 7a - Registration Open

Conference Center Lobby

## 12-7p - Silent Auction Room Open (open for donations @ 9a) Mendota

## 1-5p - Workshops -- See Thursday Workshop Schedule

## 4-5:30p - Atrium Recital

Hotel Atrium

## 5p - Marketplace/Festiewear Opens

Michigan

## 6:30p - SheRocks House Open

Superior

6:55p - Opening Ceremony Nan Brooks & Carla Carter  
(Jenny McKittrick)

## 7p - One Fine Day - A Film by Kay Weaver (Jenny McKittrick)

7:10p - Carly Calbero-2018 Emerging Artists Winner.  
(Jenny McKittrick)

8:10p - Jennifer Berezan (Sunny Pfifferling-Irons)

9:10p - I N T E R M I S S I O N

9:30p - Emerging Artist Contestant

9:45p - Heather Mae with JJ Jones (Laura Kolb)

10:35p - Living Room - Emerging Artist Contest. Your chance to vote on the winning artist. Plus, a place to hang out and relax or get involved in an open jam. Hosted by Nancy Scott

## Thursday Workshops

### 12-5p Red Tent Clan The Red Tent

Red Tent

The Red Tent offers a safe space where women come together for a variety of experiences and conversations. Formal meditations and workshops will be offered as well as open time to find respite and rejuvenation. Workshop schedule of daily activities will be listed in the program and posted outside the Red Tent space.

### 1-1:50p Harvest The Red Tent -Then and Now

Red Tent

Red Tent - Herstory and the current movement. Why it's important to us and how we manifest it today.

### 1-1:50p MsBoyeNagle&SallyJeaux Deidre Meditation Circle Setting Intention to Engage Our Village

Women of all spiritual paths and faith traditions are invited to sit in circle and come to agreement about a group intention for "Engaging our village" over the weekend and after. We will then meditate/focus energy—each in our own way to charge our intent. Bring something for a centre altar.

### 1-1:50p Jamie Anderson Round a rama dama ding dong

Ginni

Learn a bunch of cool rounds from an old Girl Scout who knows a million of them.

### 1-2:50p Renée Janski NWMF Women's Chorus Rehearsal

Middleton

Join like-minded women to add your own unique, musical energy to the festival. The chorus will perform Sunday afternoon on the festival main stage.

### 1-2:50p Wahru Cleveland & Rani Biffle-Quimba Opening Drum & Dance Jam

Wahru

Join Wahru and Rani for a high-energy start to the festival!

### 2-2:50p Red Tent Clan Goddess Women Gathering

Red Tent

An opportunity for Goddess women to gather and connect.

### 2-3:20p Eugenia Fernandez Esther's Village

Ferron

If you are injured, incapacitated, or pass away do you have your affairs in order to make life easier for your wife, partner, next of kin and/or friends to assist you or make final arrangements? In this workshop we will discuss various ways to prepare for such events.

### 2-3:20p Tret Fure Playing Guitar with a Partial (cut) Capo

Ginni

Tret will be helping you find new and interesting colors for your songs by adding a cut (partial) capo to your guitar playing. In this workshop you will be able to broaden your musical palette and make your songs more interesting and unique. It's simple, you barely have to change fingering and it is fun! We will play a simple, prewritten song about the change we need to see in our lives. You must provide your own cut capo.

### 2:30-4:20p Nancy Vedder-Shults Tapping Your Creativity

Amoja

Many times in the creative process you need to delve into your inner wisdom. In this interactive workshop, we will explore divination techniques as a means of tapping your creativity. An ideal introduction to divination, this workshop also provides an opportunity for those experienced with oracles to find fresh insight.

### 3-4:20p Toni Armstrong Jr Lesbian Vampires

Berniece

Vampires (or earlier versions of life-sucking undead creatures) appear in the mythologies of almost every culture. This workshop will trace the history of vampire

paradigms in modern literature, with a focus on how female vampires fit in - and have been erased. We'll also highlight major lesbian vampires Carmilla, Gilda, Sterling O'Blivion, and others. Some discussion of important genre movies will be included as well.

### 3-4:20p Film Series The Passionate Pursuits of Angela Bowen

Everywoman

This must-see doc tells the story of Angela Bowen, who grew up in inner city Boston during the Jim Crow era and went on to become a classical ballerina, legendary dance teacher, and a black lesbian feminist activist, organizer, writer and professor. Candid and compelling, Passionate Pursuits depicts Bowen's life across six decades with archival footage, timeless musical selections, photographs and interviews. (Film courtesy of WOMEN MAKE MOVIES)

### 3-4:20p Tere Parsley Starnes & Forrest Mainville The Four Elements and Queer Astrology

Gwen

The elements are the building blocks of astrology and of our lives. Find out what the elements—air, earth, fire and water—have to say about you. Queer astrology is about expanding paradigms to open us to living more authentically and mindfully. There will be an opportunity to ask questions about your chart and interact with others in this workshop. Optional: Bring a copy of your chart or your birth information (date, time, and place).

### 3-4:50p Red Tent Clan Sanctuary

Red Tent

Quiet time for breathing, meditation, yoga practice....Sanctuary will be available twice each day. Check the Red Tent schedule outside our door.

## Thursday Workshops

### 3-4:50p Jamie Mayo Deidre Own Your Story, Own Your Life

Most of us have been handed stories about ourselves that diminish us. Utilizing a series of exercises, each participant will craft a story thick enough to hold the full power and truth of who they are. Dare to know a bigger story.

### 3-4:50p Jori Costello Middleton NWMF Women's Ukulele Chorus Rehearsal

The 2019 Women's Ukulele Chorus, "Medley Mania", will mix and mash iconic lesbian music, independent women artists, and regional women choral composers into melodious mayhem. All levels welcome, tuners recommended, singing encouraged. We will work on three or four numbers

throughout the festival to perform for the Sunday SheRocks stage to the third power of festie performers! Use your WhoVa app to download sheet music with chords.

### 3-5p Lance Link Hotel Room 226 Singles Drop-in Home Room

Drop-in room for singles and solo travellers, chat, make some art, leave a note for new friends and old, rest up between events, connect. Check hours on door for other times/activities.

### 3:30-4:50p Nancy Scott Ginni Jam with Nancy Scott

Join noted singer-songwriter Nancy Scott to meet other musicians and play together in a safe and welcoming space. Listeners welcome.

### 3:30-4:50p Barbara Borden Wahru Drumming in the Power of Now: Improvising & Soloing

Starting from the beginning...being present...bodies connecting to the inner pulse - the essential connection to everything drumming. There are no mistakes, just new takes while exploring what it feels like to follow the flow and joy of creating. Intermediate & Advanced Drummers.



## Women Composers Recital Series

Please watch for updated information on WhoVa, near Registration and on the board in the Atrium. More musicians are likely to appear! Profiles can be found in the Workshop Presenters Profile pages

### Thursday

3:15-4:30p Angie Haze Gardner-Watkins  
This musical presentation focuses on evidence of music and art as tools for mental health.

5:10-5:50p Amor Y Luz, Acoustic Duo Atrium

### Friday

11a-11:50p Amor Y Luz, Acoustic Duo Gardner-Watkins

4:10-5:30p Dr. Beth York Gardner-Watkins  
Composing, Finding Voice: A Collaboration with Women Survivors of Domestic Violence Learn about the collaborative process involved in creating a performance piece with women survivors of domestic violence.

### Saturday

12-1:15p Laurie A. Jarski & Melodie Griffis Gardner-Watkins  
This duo performs an eclectic mix of blues, jazz, and modern works featuring original and modern folk music with a classical music influence, including a reworking of some personal traditional favorites, like 'Little Birdie', and 'Pastures of Plenty'.

1:30-2:45p Sarah Gillespie & Susan Gaeddert Gardner-Watkins  
An F horn and piano duo.

3:15-3:50p Leslie D. Judd Atrium  
Piano improvisations.

4-5:00p Sarah Gillespie & Susan Gaeddert Atrium  
An F horn and piano duo.

## You are invited to Dine with an Artist

This special experience in the Marriott Private Dining Room features time with a festival artist, a unique menu, and a more intimate setting than the Artist Breakfast. The seating is limited. Make your reservation at Registration Desk.







# Friday Schedule



(Key: Time-Event-Room) All Stage Houses open 1/2 hour prior to start of stage (unless otherwise stated.)  
Names in parentheses throughout the program are the names of the interpreters for the Deaf.

<b>7a - Registration Open</b>	<b>Conference Center Lobby</b>	<b>1-2:50a - Women's Ukulele Chorus Rehearsal with Jori</b>	<b>Middleton</b>
<b>7-9:30a - Breakfast</b> (Food Trucks/Conference Center Entrance)	<b>Hotel Atrium</b>	<b>3p-4:50p - Women's Vocal Chorus Rehearsal with Renée</b>	<b>Middleton</b>
<b>8a-5p - Workshops - See Friday Workshop Schedule</b>		<b>4-5:30p - Atrium Recital</b>	<b>Hotel Atrium</b>
<b>9-10:30a - Paving the Way: Black Women Who Inspire Across the Generations</b> - Carla Carter, Jorjet Harper and Nedra Johnson	<b>Deidre</b>	<b>4-5:20p - Shabbat Service</b>	<b>Deidre</b>
<b>9a-7p - Silent Auction Room Open</b>	<b>Mendota</b>	<b>6:30p - SheRocks House Open</b>	<b>Superior</b>
<b>10a - Marketplace/Festiewear Opens</b>	<b>Michigan</b>	<b>7p - Crys Matthews</b> (Sunny Pfifferling-Irons)	
<b>10-11a - Storytelling with Jamie Mayo</b>	<b>The Living Room/Michigan</b>	<b>8p - Tret Fure</b> (Jenny McKittrick)	
<b>11a-1:30p - Lunch</b> (Food Trucks/Conference Center Entrance)	<b>Hotel Atrium</b>	<b>9p - INTERMISSION</b>	
<b>11a-12:30p - Atrium Recital</b>	<b>Hotel Atrium</b>	<b>9:20p - Emerging Artist on the Side Stage</b>	
<b>11a-1p - Open Mic hosted by Nancy Scott</b>	<b>Living Room/Michigan</b>	<b>9:35p Julie Goldman</b> (Emily Kimmel-Kurtz)	
<b>12:30p - Spotlight Stage Doors Open</b>	<b>Wisconsin</b>	<b>10:40p - Living Room - Meet and Play</b>	<b>Michigan</b>
<b>1p - Brynn Albanese &amp; Susan Gaedder</b> (Emily Kimmel-Kurtz)		Open Mic and Open Jam. Artists and attendees meet and play together. A place to hang out and relax. Hosted by Nancy Scott	
<b>1:45p - Miniature Maestrapieces</b> (Emily Kimmel-Kurtz)		<b>10:40p - Dance with kg lang - A Tribute to Women's Folk Rock</b>	<b>Wisconsin</b>
<b>3p - Valerie Coleman</b> (Emily Kimmel-Kurtz) With narration by Carla Carter		<b>10:40p - Midnight - Late Night Drum &amp; Dance Jam</b>	<b>Monona</b>
		Led by Wahru with Rani	

## Friday Workshops

### 8a-5p Red Tent Clan Red Tent The Red Tent

The Red Tent offers a safe space where women come together for a variety of experiences and conversations. Formal meditations and workshops will be offered as well as open time to find respite and rejuvenation. Workshop schedule of daily activities will be listed in the program and posted outside the Red Tent space.

### 8-8:50a Harvest Red Tent Morning Meditation

### 9-10:30a Jorjet Harper, Nedra Johnson & Dr. Carla Carter Deidre/Everywoman Paving the Way: Black Women Who Inspire Across the Generations

We hold a special place in our hearts for women whose work has changed our lives, who inspire us to action—whose very existence challenges us to do more and be better. Black women of achievement who have broken racial and sexual barriers in their lives have naturally had a pivotal role to play in inspiring women of color of later generations. This multimedia presentation will focus on some of these amazing women and on the younger women they have inspired.

### 10a-1p Lance Link Hotel Room 226 Singles Drop-in Home Room

Drop-in room for singles and solo travellers,

chat, make some art, leave a note for new friends and old, rest up between events, connect. Check hours on door for other times/activities.

### 10:45-12p Rain Red Tent Endarkenment

"The woman's place of power within each of us...it is dark, it is ancient, and it is deep." – Audre Lorde. Through information sharing, music, meditation and making, we will plumb the deep wells of ourselves, seeking the wisdom we hold within. We begin with an introductory discussion, then journey within to engage the dark self, make an altar item, charm or poppet based on that experience, and close in silence to savor our experience.

### 11-11:50a Allison K. Brown, LCPC Ferron Nurturing Developmental Relationships with Youth

Come learn about five powerful elements we can express in over 20 different ways for the good of our children, ourselves, and our communities. Allison will present the Search Institute's model of Developmental Relationships.

### 11-11:50a Wahru Cleveland Ginni Common Sense Self-Defense

One should not assume that this workshop will give you all the tools to completely protect

yourself. But you can learn how to use your hands, feet, head, voice, elbows, or objects at hand when faced with an attacker. Wahru will facilitate this workshop and others are asked to share their experiences.

### 11-11:50a Ruth Debra Lucie L- Fund Helping Lesbians – your community can do the same

The L-Fund was formed to create a fund for Lesbians in our area and has grown and achieved so much. Learn how your Lesbian Community can come together to help your sisters.

### 11-11:50a Rani Biffle-Quimba Wahru Beginning Hand Drumming

We will go over the basics of hand drumming. Our focus will be hand control, technique for base, tone, slap, and flam, drum etiquette, and how to play in a drum circle. Some extra percussion instruments will be available.

### 11a-12:20p Forrest Mainville Gwen Gender: Beyond the Binary

Most of us have worked hard to fit into the gender box we were assigned at birth. But what if gender is more of a constellation of options? What might it look like to be on the gender continuum or even outside of it? We will clarify what gender is and a

**NWMF ORCHESTRA WOMEN COMPOSERS SERIES PRESENTS**

**Nan Washburn, Music Director**

**Brynn Albanese, violin & Susan Gaeddert, piano (1:00–1:30 p.m.)**

**Three Romances Op. 22** (1853) ..... Clara Schumann (1819–1896)  
I. Andante      II. Allegretto      III. Leidenschaftlich schnell

**Nocturne** (1911) ..... Marie-Juliette Olga (“Lili”) Boulanger (1893–1918)

**D’un matin de printemps** (1918) ..... Marie-Juliette Olga (“Lili”) Boulanger (1893–1918)

**Fisherman's Song** (1996) ..... Chen Yi (b. 1953)

**Polish Caprice** (1949) ..... Grażyna Bacewicz (1909–1969)

**Miniature Maestrapieces (1:45–2:45 p.m.)**

**Nonetto in E flat Major, Op.38** (1849) ..... Louise Farrenc (1804–1875)

**IV. Adagio-allegro**

Valerie Coleman, flute  
Carol Rosing, bassoon  
Alexis Carreon, viola

Laura Medisky, oboe  
Sarah Gillespie, horn  
Laurie A. Jarski, cello  
Nan Washburn, conductor

Diane Heffner, clarinet  
Brynn Albanese, violin  
Susanne DiVincenzo, double bass

**Trio No. 3 in D Major, Op.1** (ca.1770) ..... Maddalena Lombardini-Sirmen (1745–1818)

**I. Allegro cantabile**

Brynn Albanese, violin

**II. Menuetto grazioso – Allegro assai**

Amanda Suckow, violin

Laurie A. Jarski, cello

**Divertimento** (1780) ..... Anna Amalia von Sachsen Weimar (1739–1807)

**I. Adagio**

Diane Heffner, clarinet

**II. Allegro**

Alexis Carreon, viola  
Susan Gaeddert, piano

Laurie A. Jarski, cello

**To Vals Tou Gamou** (from *The Beekeeper*, 1986) ..... Eleni Karaindrou (b. 1941)

Diane Heffner, clarinet

Brynn Albanese, violin  
Susanne DiVincenzo, double bass

Laurie A. Jarski, guitar

**Cantando Tango** (1931) ..... Mercedes Simone (1904–1990)

Diane Heffner, clarinet

Brynn Albanese, violin

Susan Gaeddert, piano

Susanne DiVincenzo, double bass

**Funky Blues** (2013) ..... Laurie A. Jarski (b. 1964)

Amanda Suckow, violin

Alexis Carreon, viola  
Susanne DiVincenzo, double bass

Laurie A. Jarski, cello

**Altar de Muertos – IV. La Calaca** (1997) ..... Gabriela Ortiz (b. 1964)

Brynn Albanese, violin

Amanda Suckow, violin

Alexis Carreon, viola

Laurie A. Jarski, cello

**Four on the Floor** (1983) ..... Libby Larsen (b. 1950)

Brynn Albanese, violin

Laurie A. Jarski, cello  
Susan Gaeddert, piano

Susanne DiVincenzo, double bass

**Featured Artist/Composer: Valerie Coleman Plays Valerie Coleman (3:00–3:55 p.m.)**

**Fanmi Imèn** (2018) ..... Valerie Coleman

Valerie Coleman, flute

Susan Gaeddert, piano

Carla Carter, spoken word

**Portraits of Langston** (2007) ..... Valerie Coleman

Valerie Coleman, flute

Diane Heffner, clarinet

Susan Gaeddert, piano

Carla Carter, spoken word

**Tzigane** (2011) ..... Valerie Coleman

Valerie Coleman, flute

Laura Medisky, oboe  
Diane Heffner, clarinet

Carol Rosing, bassoon  
Sarah Gillespie, horn

**Umoja** (2001) ..... Valerie Coleman

Valerie Coleman, flute

Laura Medisky, oboe  
Diane Heffner, clarinet

Carol Rosing, bassoon  
Sarah Gillespie, horn



## Friday Workshops

variety of ways to express it. Participants will be given the opportunity to share their own stories and ask questions. Care will be taken to create a safe space for sharing. Resources will be provided.

### 11a-12:20p Shelley Graff Middleton Singing In Sacred Circle

Singing In Sacred Circle honors the tradition of the late Kay Gardner where short, repetitive women-centered songs/chants are shared in a relaxed, safe circle. Our voices create an energy that is both empowering and healing for our song community. Come sing along!

### 11:30a-12:50p Julie Goldman & Brandy Howard Everywoman

**DUMB GAY POLITICS LIVE!** With Julie and Brandy  
**DUMB GAY POLITICS LIVE!** is a live comedy politics podcast hosted by Julie Goldman and Brandy Howard. We talk about politics like we were talking about reality TV! We dissect the week in politics with lots of feelings and very little facts. Join us and our special guest as we breakdown the political news, have a lively and robust discussion with a festival performer and most likely will get it all wrong but it will feel so right.

### 11:30a-1:20p Sally Fussell & Ms. Boye Nagle Berniece

**Celebrate the Crone: A Ritual for Women over 50**  
Are you a woman over 50 whose monthly blood cycle has stopped? Let's celebrate our penultimate rite of passage. We will tell our stories, release old baggage, and ceremonially move into our crone years with joyful anticipation. No religious affiliation required.

### 11:30a-1:20p Pam Jacobson Deidre Happy Feet, Happy Bodies--An Introduction to Restorative Exercise

We will explore traditional and novel exercises to awaken, strengthen and restore our amazing bodies. Information about foot mobilization and healthy footwear as aids to wellbeing will be included. Modifications offered for varying abilities.

### 12-12:50p Indigie Femme (Tash & Elena) Wahru Indigie Femme workshop - Navajo Beauty Way

Be captivated learning about Navajo philosophy around the "Beauty Way," also known as, "Hozho Jigo", followed by a "Beauty Way" chant and song to be shared around a traditional drum.

### 12-12:50p Mary Lokers Ferron A Lamb's Exodus

Mary Lokers, once deeply entrenched in religious fundamentalism including a 21 year span in the Exodus International "Pray away the Gay" programming, shares her liberating journey from old limiting and harmful beliefs to metaphorical mysteries of internal spiritual wellbeing.

### 12-12:50p Nadene Johnson Lucie Healthy Body~Healthy Weight~Healthy You!

Get a naturopathic viewpoint on making optimal nutritional choices for your healthiest body. Learn how the gut microbiome affects your health. Bring your questions, concerns and comments for a lively discussion!

### 12-1p Red Tent Clan Red Tent Sanctuary

Quiet time for breathing, meditation, yoga practice....Sanctuary will be available twice each day. Check the Red Tent schedule outside our door.

### 12-1:20p Naomi Newman Amoja Theatre Games: Goodbye Critic, Hello Fun

Laugh a lot while you play games that require your thinking mind to get out of the way of your spontaneity and imagination. Games include physical interaction (not strenuous), movement and voice exercises. Come away with basic improvisational tools.

### 12-1:50p Louise Brill & Mary Donnelly Ginni Round Singing for Women

Connect with others by singing rounds together. Fun and instant harmony. You don't have to read music, just like to sing with others. Sheet music available. All abilities are welcome.

### 12:30-1:20p Eileen Hamper Gwen Painting Tips from a Fixit Dyke

Learn the secrets of spackle, masking tape, rags, a good brush, pad painter, the joy of getting paint all over your pants, using paint samples, gloss or flat?, overcoming fear of painting trim, drips, goofs, prep and clean-up.

### 1-1:50p Katherine Wood Ferron What is Your Legacy?

Participants will behold the legacy they've received from the ancestors, relish the legacy they're leaving and cheer the legacy each of us is giving to our community. This will be done in conjunction with the magic of the stars.

### 1-1:50p Jamie Anderson Lucie An Army of Lovers

Jamie Anderson will read from her upcoming book about women's music of the seventies and eighties. A discussion about women's music, with a question and answer period, will follow.

### 1-2:20p Holin & Harvest Red Tent Chant Writing

Learn to compose effective, powerful, easy chants for personal and group ritual. The group will compose an original chant. No experience required.

### 1-2:50p Jori Costello Middleton NWMF Women's Ukelele Chorus Rehearsal

The 2019 Women's Ukulele Chorus, "Medley Mania", will mix and mash iconic lesbian music, independent women artists, and regional women choral composers into melodious mayhem. All levels welcome, tuners recommended, singing encouraged. We will work on three or four numbers throughout the festival to perform for the Sunday SheRocks stage to the third power of festie performers! Use your Whova app to download sheet music with chords.

### 1-2:50p Wahru Cleveland Wahru The Phrase that Plays: Beginning/ Intermediate Afro-Centric Drumming

This workshop will focus on Afro-Centric rhythms and sound techniques, playing with balance, keeping time, how to mix in polyrhythm patterns, playing the dunun (heartbeat bass drum) and more. Some drumming experience will be helpful, but is not required.

### 1:30-2:50p Sara Karon Berniece Lesbian Widows Grief Support

This workshop provides a space for lesbians who have lost their partners. Join together to share memories, understandings, struggles, and strategies for living with our losses. The workshop is not intended as professional therapy. This is for lesbian widows only.

### 1:30-2:50p Suzanne Gray Gwen Lesbian Co-housing and Retirement Communities

Let's discuss next steps in creating housing for lesbians. This workshop will provide an opportunity for those interested in the topic to network and discuss housing and community needs as we age.

## Friday Workshops

### 1:30-3p Film Series **Everywoman** **The Girls in the Band**

The Girls in the Band tells poignant, untold stories of female jazz and big band instrumentalists from the late 30s to the present day. They endured sexism, racism and diminished opportunities, yet continued to persevere, inspire and elevate their talents. Although by the mid-fifties female jazz musicians had disappeared from the workplace, today a new breed of gifted women are taking their rightful place in the world of jazz.

### 1:30-3:20p Nancy Vedder-Shults **Amoja** **The World is Your Oracle: Divinatory Practices for Tapping Your Inner Wisdom**

In this interactive workshop, we will use our senses to explore techniques from *The World Is Your Oracle* to tap into the wisdom that resides within each of us. Come and sink deeply into your inner knowing, fine-tune your life's trajectory, and renew your connection with Spirit.

### 2-2:50p Peggy Patty & Phyllis Lau **Deidre** **Soothe Your Soul by Relaxing In a Live Healing Vibrational Sound Bath**

Join us as we nurture ourselves in these stressful times! Immerse yourself in the soothing auditory experience of relaxing into live healing vibrations, including tuning forks, flute, singing bowl, rattle, and drum. Sit or lie down to de-stress and enjoy.

### 2-2:50p RevBoyeNagle&SallyJeaux **Ferron** **Remember Me This Way**

Historically we have been invisible in obituaries. Writing your own gives you the chance to be remembered for who you are and what you value in your life. You will leave this workshop with insight and an outline. Bring a pen and a sense of adventure.

### 2-3:20 Gaye Todd Adegbalola **Lucie** **Slide Guitar in open G and open D Tunings**

If you want to add a new dimension to your guitar playing, try open G and open D tunings. This will add a new "weapon to your arsenal!" You should bring your guitar, a tuner, and if possible, a slide and finger picks. This is for advanced beginners and intermediate players. Easy and fun!

### 2-3:50p Amy Vitro & Kutasha Silva **Ginni** **Shekere for Your Soul: The Art and Roots of the Gourd Drum**

We will explore the magic of the shekere, an earthy West African instrument, and how we can tune into the life force of this drum and our own souls. We will share information about its Yoruba origins and about Afro-

Caribbean orisha traditions. There will be a limited number of shekeres available to use, so bring one if you have one!

### 3-3:50p Carly Calbero **Berniece** **Overcoming Stereotypes**

Carly invites you to have a conversation about stereotypes made based on the people you love, the color of your skin, or your class. By openly addressing the preconceived notions we hold, we can talk about celebrating our individuality that makes us better as a whole.

### 3-3:50p Kristi Hallisy **Gwen** **Tai Chi for Personal Wellness**

Optimal aging involves wellness of mind, body and spirit. Mobility is key to maintaining independence, community engagement and quality of life. Tai Chi is a tool that fosters all aspects of wellness through both individual and group practice. Come play at Tai Chi!

### 3-4:20p Anne Dornberg **Ferron** **Living Single in a Coupled World**

I will create a safe space to discuss pros/cons of living solo, explore how single women can meet potential partners and/or find emotional support, and facilitate conversation about how it feels to be single in a coupled world.

### 3-4:50p Red Tent Clan **Red Tent** **Sanctuary**

Quiet time for breathing, meditation, yoga practice....Sanctuary will be available twice each day. Check the Red Tent schedule outside our door.

### 3-4:50p Renée Janski **Middleton** **NWMF Women's Chorus Rehearsal**

### 3-4:50p Film Series **Wahru** **Keeper of the Beat with Barbara Borden**

Barbara Borden - drummer, composer, teacher and peacemaker - tells her inspiring life's story through footage of her acclaimed play "She Dares to Drum," clips of her ground-breaking women's jazz band Alive! and interviews with noted artists, thinkers, students and friends in far-off places (Zimbabwe, former Yugoslavia, Siberia). The film will be followed by a Q&A and drumming by Barbara. Film courtesy of Barbara Borden.

### 3-5p Lance Link **Hotel Room 226** **Singles Drop-in Home Room**

Drop-in room for singles and solo travellers, chat, make some art, leave a note for new friends and old, rest up between events,

connect. Check hours on door for other times/activities.

### 3:30-4:50p Marie Sienkowski & Laura Smith **Lucie** **Let's Talk about Cats!**

Aspiring, recovering and current "cat ladies" will gather for a facilitated discussion and sharing of our experiences, stories and pictures of our beloved felines. We will share tips and tricks for keeping our cats healthy and for addressing various behavior issues, as well. Mostly, though, we will enjoy talking about and hearing about CATS!

### 4-4:50p Lourdes Pérez & Annette D'Armata **Gwen**

**VoxFem: Unearthing the Female Creative Voice**  
Women are creating music worldwide in isolation. Defeating that isolation is to consolidate power. VoxFem.org is a growing archive/broadcast centering women artists from every nation/occupied territory, non-English languages, women of color, women with disabilities, lbtq2. Unearth with us.

### 4-5:20p Sara Karon **Amoja** **Shabbat Service**

Friday night marks the beginning of the Jewish Sabbath (Shabbat). We join together to welcome the Shabbat Queen with joyful, songful prayer. Those who wish may have dinner together following the service.

### 4-6:30p Wahru Cleveland **Deidre/** **Everywoman**

### **MultiCultural Women and Women of Color Reception and Dinner**

All women are invited to join their sisters of color for an informal dinner (bring your dinner from restaurant or food trucks), conversation, and maybe dancing! This is an opportunity to make new friends, celebrate women of color, and create alliances for sisterly persistence for social justice.

### 4:30-5p Christine Powers **Ferron** **Single/Solo Dinner Out**

Join other single or solo traveling women for dinner on Friday night. We will meet in Ferron and walk to World of Beer, a restaurant located near the hotel. It has a variety of menu choices, many healthy. Great way to share festival experiences, tips, and suggestions.

### 10:30p Wahru & Rani Biffle-Quimba **Wahru** **Late Night Drum & Dance Jam**

Still have energy after the evening shows?  
End your day with a drum and dance jam.





# Saturday Schedule



(Key: Time-Event-Room) All Stage Houses open 1/2 hour prior to start of stage (unless otherwise stated.)  
Names in parentheses throughout the program are the names of the interpreters for the Deaf.

<b>7a - Registration Open</b>	<b>Conference Center Lobby</b>	<b>1-2p - Women's Vocal &amp; Uke Chorus Rehearsal with Renée &amp; Jori</b>	<b>Middleton</b>
<b>7-9:30a - Breakfast</b> ( <i>Food Trucks/Conference Center Entrance</i> )	<b>Hotel Atrium</b>	<b>1-2:50p - Women's Drum Chorus Rehearsal w/Wahru</b>	<b>Wahru</b>
<b>8a-3p - Workshops - See Saturday Workshop Schedule</b>		<b>2-2:50p - Women's Uke Chorus Rehearsal w/Jori</b>	<b>Middleton</b>
<b>10a - Featured Speakers</b>	<b>SheRocks Main Stage</b>	<b>3-5p - Live Auction on the Spotlight Stage</b>	<b>Wisconsin</b>
<b>Lisa Vogel and Elvira Kurt</b> ( <i>Emily Kimmel-Kurtz</i> )		<b>6:00p - SheRocks House Open</b>	<b>Superior</b>
<b>9a-2p - Silent Auction Room Open</b>	<b>Mendota</b>	<b>6:20 - In Memoriam</b>	
<b>10a - Marketplace/Festiewear Opens</b>	<b>Michigan</b>	<b>6:30p - Natalia Zukerman</b> ( <i>Jenny McKittrick</i> )	
<b>10-11a - Storytelling with Jamie Mayo</b>	<b>The Living Room/Michigan</b>	<b>7:30p - Karen Williams</b> ( <i>Sunny Pfifferling-Irons</i> )	
<b>11a-12:30p - Open Mic hosted by Nancy Scott</b>	<b>The Living Room/Michigan</b>	<b>8:20p - INTERMISSION</b>	
<b>11a-1:30p - Lunch</b> ( <i>Food Trucks/Conference Center Entrance</i> )	<b>Hotel Atrium</b>	<b>8:40p - Gaye Adebolola</b> ( <i>Laura Kolb</i> )	
<b>11:30a - Spotlight Stage Doors Open</b>	<b>Wisconsin</b>	<b>9:40p - Elvira Kurt</b> ( <i>Emily Kimmel-Kurtz</i> )	
<b>12p - Indie Femme</b> ( <i>Laura Kolb</i> )		<b>10:30p - Living Room - Meet and Play</b>	<b>Michigan</b>
<b>1p - World on Fire</b> ( <i>Jenny McKittrick</i> )		Open Mic and Open Jam. Artists and attendees meet and play together. A place to hang out and relax. Hosted by Nancy Scott	
<b>2p - Lourdes Perez</b> ( <i>Marie Hernandez</i> )			
<b>12-1p - Women's Vocal Chorus Rehearsal with Renée</b>	<b>Middleton</b>		

## Saturday Workshops

### 8a-5p Red Tent Clan Red Tent The Red Tent

The Red Tent offers a safe space where women come together for a variety of experiences and conversations. Formal meditations and workshops will be offered as well as open time to find respite and rejuvenation. Workshop schedule of daily activities will be listed in the program and posted outside the Red Tent space.

### 8:30-9:50a Shelley Graff Middleton Singing In Sacred Circle

Singing In Sacred Circle honors the tradition of the late Kay Gardner where short, repetitive women-centered songs/chants are shared in a relaxed, safe circle. Our voices create an energy that is both empowering and healing for our song community. Come sing along!

### 9-9:50a Wahru Amoja Let's Talk

MultiCultural women, come share your stories! Helpful discussion about how to communicate in a multi-cultural environment so that all are heard. All women are welcome! Participants are asked to sign up at the beginning of the session and limit their stories to 10 minutes or less.

### 9-9:50a Harvest Red Tent Morning Meditation

### 9-9:50a Ruth Debra & Bonnie Wagner Ginni Old Lesbians Resisting and Persisting.

Old Lesbians Organizing for Change (OLOC) is one of the very few national organizations by and about and for Old Lesbians. OLOC is an organization of activists fighting intersecting oppressions including but not limited to Ageism, Racism, Sexism, Lesbophobia, classism and transphobia. Presenters will talk about current activities, Summer 2019 National Gathering and also starting a chapter in your community.

### 9-9:50a Kristi Hallisy Gwen Tai Chi for Personal Wellness

Optimal aging involves wellness of mind, body and spirit. Mobility is key to maintaining independence, community engagement and quality of life. Tai Chi is a tool that fosters all aspects of wellness through both individual and group practice. Come play at Tai Chi!

### 10-11:30a Lisa Vogel and Elvira Kurt SheRocks Main Stage

### 10-11:30a Film Series Everywoman The Girls in the Band

The Girls in the Band tells poignant, untold stories of female jazz and big band instrumentalists from the late 30s to the present day. They endured sexism, racism and diminished opportunities, yet continued to persevere, inspire and elevate their talents. Although by the mid-fifties female jazz musicians had disappeared from the

workplace, today a new breed of gifted women are taking their rightful place in the world of jazz.

### 10a-1p Lance Link Hotel Room 226 Singles Drop-in Home Room

Drop-in room for singles and solo travellers, chat, make some art, leave a note for new friends and old, rest up between events, connect. Check hours on door for other times/activities.

### 10:30-11:50a Red Tent Clan Red Tent Making!

A time to enjoy the company of women while working on your own project or one from our supplies. Drop spinning, lucet cord braiding, coloring, rattle making, and dream pillows are available. Don't know how? We'll teach you!

### 12-12:50p Shelley Graff Amoja Keep Singing! Start a Singing In Sacred Circle In your Community

Love to sing with women? Come brainstorm ideas, get questions answered, and leave with a plan for starting a Singing Circle when you get home! Shelley has helped women start and maintain Singing Circles throughout the U.S. for the past 15+ years!



## Saturday Workshops

**12p Sally Jeux & Rev. Boye Nagle Berniece**  
**Recovery: where does addiction live in the chakras?**

We will discuss how addictions are held in the chakras and developmental stages map.

**12-12:50p Christine Powers Ferron**  
**Coffee, Coloring and Conversation**

Relax, unleash your creativity, or lack of! It's all for fun and meeting new friends. Bring out your inner kindergartner! Play is important in our lives. This old genre has made an adult comeback it's all the rage. Your leader will have some coffee available or bring your own beverage. Coloring books & crayons will be for sale, or bring your own!

**12-12:50p J.J. Jones Wahru**  
**Guaranteed Groove: Finding Your Inner Rhythm**

I believe everyone has an innate sense of rhythm. The trick is getting in touch with it by letting your body do what it naturally does: move to a pulse. In this interactive class we'll learn how to count and feel various beat subdivisions. Through grounding yourself, moving your body, listening and counting, you too can internalize and embody steady rhythm. This will be a fun, energetic class that will give you practical tools for finding your inner groove!

**Saturday 12-1250 Deidre Thistle Peterson**  
**Being Radical Feminist in Patriarchy: Stories from Madison and Beyond**

Come to this workshop space to listen to Thistle share her stories about living in the Mad City as a radical feminist media activist. Learn more about feminist community powered radio in the form of WLRN's online community "station" and put the "p" back into the words POWER and PARTICIPATION. Thistle will talk for the first half an hour, telling stories from Madison, and then the floor will be opened up for questions, discussion, reporting and announcements for all those who attend. Womyn of color and other oppressed groups are especially invited to be present and heard at this workshop.

**12-1p Renée Janski Middleton**  
**NWMF Women's Chorus Rehearsal**

**12-1p Red Tent Clan Red Tent Sanctuary**

Quiet time for breathing, meditation, yoga practice....Sanctuary will be available twice each day. Check the Red Tent schedule outside our door.

**12-1:20p Marsha Wood & Karen Kirschke Ginni**

**Sharing Travel Opportunities - Let's Have Memories, Not Just Dreams**

Whether you RV, timeshare, or hotel, let's get together and share our networking experiences with each other. Please bring information, pamphlets, and flyers on places, organizations, or intentional communities you have visited. This is intended to be an information swap for places that are affordable, accessible, and welcoming. Drop by and leave/take info from tables, share your travel business website, or stay for networking. Let's find out how our travel dollars are being spent. Got a favourite campground that will accommodate rallies? Is there a Time Share that works for you? Women's B&B we need to hear about? Come share your info with the community. After close of Conference, we will combine the info and send it to all participants.

**12-1:20p Karen Williams Gwen**  
**Finding Joy in Diversity**

Karen's highly appraised diversity training workshop, "Finding Joy in Diversity: Many in Body, One in Mind". emphasizes improving communication skills to address conflict resolution and reigniting commitment to reduce stress and burnout.

**12-1:20p MaryLokers&JaneSkowron Lucie**  
**The Art and Science of Hand and Foot Reflexology**

Come join the fun and learn the multiple benefits of hand and foot reflexology from the reflexologist sisters. Relaxation, balance, pain relief, lymphatic movement and body awareness are some of the topics covered in this workshop.

**1-2p JoriCostello & RenéeJanski Middleton**  
**NWMF Women's Ukelele and Chorus Joint Rehearsal**

**1-2:50p Crys Matthews Amoja**  
**Embrace the Change: A Crash Course on Key Transposition**

When a song speaks to us, it doesn't always speak to our vocal abilities. Nikki Giovanni said, "A lot of people resist transition and therefore never allow themselves to enjoy who they are. Embrace the change, no matter what it is; once you do, you can learn about the new world you're in and take advantage of it." Sometimes a small change in key can be the difference between singing in a way that makes your vocal chords give out, or in a way that lets you freely sing your heart out.

(Bring Your Instruments)

**1-2:50p Pam Jacobson Berniece**  
**Happy Feet--Natural Foot Health is Feminist!**

Women have foot concerns and problems of all kinds, including bunions, hammertoes, "flat feet," and plantar fasciitis, that are especially noticeable as we grow older. We can empower ourselves. Current information about healthy footwear and restorative exercises for optimal foot health will be offered.

**1-2:50p Toni Armstrong Jr. & Nedra Johnson Deidre**  
**Amazons, We're Going Home: We Want The (Michigan) Land**

Come hear the latest, and get your questions answered, about the 650 acres of Michigan land that are being purchased "for women, for girls, forever." (Former site of the Michigan Womyn's Music Fest.) Summer 2019 gatherings are happening - AMAZONS, WE'RE GOING HOME!

**1-2:50p Film Series Everywoman**  
**Anchor and Hope**

In their mid-30s, Eva (Oona Chaplin) and Kat (Natalia Tena) live a carefree life in their London canal boat until Eva tells Kat that she definitely wants a child. Kat resists, knowing that it will end their bohemian lifestyle. When Kat's best friend Roger drops in from Barcelona, the three of them decide to create the baby together. Their differing expectations of intimacy and responsibility severely strains their relationship. Film courtesy of WOLFE VIDEO.

**1-2:50p Kathleen Kemnitz & Carrie Staley Ferron**

**Create Your Own Vulva Cake**

All supplies provided to decorate a vulva cupcake (or as you wish) in a fun, safe and open space. Drop in ready to play and create an edible creation of your own. Most people take about 15-20 minutes, come any time during the workshop with an open mind. While supplies last.

**1-2:50p Wahru Cleveland & Rani Biffle-Quimba Wahru**  
**NWMF Women's Drum Chorus Rehearsal**

This is the final rehearsal for the drum chorus.

**1:30-2:50p FireHawk Stewart Red Tent**  
**Finding Your Center in Tumultuous Times**

The day to day uncertainty in our world is undermining our wellbeing and immune systems. Finding ways to minimize or eliminate the effects of stress can be a



## Saturday Workshops

life saver. We will discuss various stress triggers, then practice some techniques to redirect the energy created.

### 1:30-2:50p Jorjet Harper Gwen Good Vibrations: Some Thoughts on Music, Sound, and Everything

We'll take a stroll through a few of the more speculative, fun, and fantastic aspects of music and sound. What were the earliest known musical instruments, and who played them? How are sound waves visualized? Does music not only affect our brain chemistry, but also animals, plants, cells, and even bacteria? What is the ongoing controversy of "concert" pitch vs. "natural" pitch? Is there a connection between paleolithic music and prehistoric goddess statuary? Did the Ancient Egyptians and Babylonians use tonal vibrations for healing? And more!

### 1:30-2:50p Sara Karon Lucie Grief Support

It can be difficult to attend an event like the Festival while also grieving. The workshop

is an open space for people seeking understanding and support while mourning the loss of a loved one. This workshop is not intended as professional therapy.

### 2-2:50p Becky Thacker, Harriet Clare & Eugenia Fernandez Ginni Dance Like No One's Watching

A line dance is a choreographed group dance with a repeated sequence of steps. Come and learn some basic line dance moves and dance with us! Really, nobody cares if you don't get the steps right — we're not performing, just having fun.

### 2-2:50p Jori Costello Middleton NWMF Women's Ukelele Chorus Rehearsal

### 3-3:50 Red Tent Clan Red Tent Chant Sharing

Come share your favorite chants with the Clan. Maybe learn some new ones! Drums & rhythm instruments encouraged.

### 3-5p Lance Link Hotel Room 226 Singles Drop-in Home Room

Drop-in room for singles and solo travellers, chat, make some art, leave a note for new friends and old, rest up between events, connect. Check hours on door for other times/activities.

### 4-4:50p Red Tent Clan Red Tent Sanctuary

Quiet time for breathing, meditation, yoga practice....Sanctuary will be available twice each day. Check the Red Tent schedule outside our door.

### 4-4:50p Rani Biffle-Quimba Pool Aqua ZUMBA®

Aqua ZUMBA® brings the ZUMBA® Fitness Experience to the water by adapting all the Latin moves to an aqua fitness type class. This class will tone your muscles and give you a cardiovascular training while having so much fun!



## Sunday Schedule



7:00-9:30a - Breakfast Hotel Atrium

7:00a - Registration Open Conference Center Lobby

10a - Marketplace/Festiewear Opens Michigan

10a - SheRocks Stage house opens Superior

10:30p - Women's Drum Chorus, Wahru, Director  
(Emily Kimmel-Kurtz)

11:00p - Women's Ukulele Chorus - Jori Costello, Director  
(Jenny McKittrick)

11:30p Women's Vocal Chorus, Renée Janski, Director  
(Sunny Pfifferling-Irons)

12p-1p - Lunch in Wisconsin (Hotel will provide cash and carry lunches and tables) (Food Trucks at Conference Center Entrance)

1p - Winner of Emerging Artist Contest Announced

1:10p - Suede and Band (Laura Kolb)

2:10p - Diva Jazz Orchestra with Sherrie Marcile  
(Sunny Pfifferling-Irons)

3:40p - Closing Ceremony Nan Brooks

## Workshops

8a-11a Red Tent Clan Red Tent  
The Red Tent

The Red Tent offers a safe space where women come together for a variety of experiences and conversations. Formal meditations and workshops will be offered as well as open time to find respite and rejuvenation. Workshop schedule of daily activities will be listed in the program and posted outside the Red Tent space.

9-9:50a Red Tent Clan Red Tent  
Sanctuary

Quiet time for breathing, meditation, yoga practice....Sanctuary will be available twice each day. Check the Red Tent schedule outside our door.

10a-10:50a Red Tent Clan Red Tent  
Closing Ritual

10:30a-11:30a Ms Boye Nagle & Sally Jeaux Ginni  
11th Annual Universal Worship Service

A Sunday Service honouring the religious traditions of the world as equal sources of the Divinity. Candles, songs & readings from the sacred texts of the world "Engaging Our Village" with Spirituality, Acceptance, Appreciation, Harmony, Beauty and Peace. No religious affiliation required. [sufimovement.org/universalworship.html](http://sufimovement.org/universalworship.html)



## Performance or Production Development Grant

Women in the Arts Inc. d/b/a National Women's Music Festival

May 2019 Award was granted to Nia and Ness to promote their house concert tours in 2019.

Grants will be awarded in amounts ranging from \$250 to \$500. Criteria and application information are available at [nwmf.info](http://nwmf.info) for the next submission period, November 15, 2019.

## Put your money where your mouth is.

Socially responsible investing is a strategy which seeks to consider both good financial return along with beneficial environmental, social, and corporate ethical practices when investing for your future.



Create an investment portfolio that reflects your values.



Phone: (415) 521-5106  
Email: [lenore.rostoni@lpl.com](mailto:lenore.rostoni@lpl.com)  
[www.clockconsultants.com](http://www.clockconsultants.com)

Lenore Rostoni is a registered representative with and securities and advisory services offered through LPL Financial, a Registered Investment Advisor, Member FINRA/SIPC.



## CELEBRATING WORKS CREATED BY WOMEN

3RD ANNUAL SEASON: JUNE 2020

FROM PAST TO PRESENT.  
FROM REVERED TO FORGOTTEN.  
FROM RAP TO RHAPSODY!

[LUNARTFESTIVAL.ORG](http://LUNARTFESTIVAL.ORG)

## Celebrating the digital and international release of: Barbara Borden: Keeper of the Beat

*A Woman's Journey  
into the  
Heart of Drumming*

### Screening

Friday, July 5 3-5pm  
Wahru Drum Room

Q&A and live drumming  
with Barbara Borden  
& Friends immediately  
following the film.

DVDs with newly revised  
cover available at the  
Goldenrod Booth



## Barbara Borden and World on Fire

are available for bookings  
[WorldonFire.info](http://WorldonFire.info)



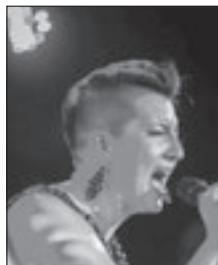
*A poetry music theater  
piece about climate change  
& related challenges.*



15th Annual  
**BOLD Fest**

Thurs, Oct 10 – Sun, Oct 13, 2019  
Coast Coal Harbour Hotel

4 days/evenings of entertainment,  
workshops, outdoor activities!



Queer as Funk



Sawagi Taiko Drummers

[info@boldfest.com](mailto:info@boldfest.com)

[www.boldfest.com](http://www.boldfest.com)

# 2021 Women in the Arts, Inc ♦ National Women's Music Festival

## Emerging Women Composers Commission

### Who should apply?

Emerging Women Composers of any age. Women of Color and women early in their career development are encouraged to apply. The composer must be available for the festival, July 2021 and must be able to deliver the completed work (score and parts, with mp3 midi file) by November 15, 2020.

Composers, performers or directors who have been paid or performed at NWMF during the past 5 years are not eligible to apply. Application due date is December 31, 2019.

### What will the Composer receive?

\$1,500 commission

Performance July 2021

Travel, food and lodging for 2021 NWMF

Archival video recording

**Reviewers:** Nan Washburn, Mary Watkins, Sue Fink, Kaia Skaggs, Alice Gomez

**Contact:** Leslie D. Judd, Special Projects Producer and WIA Treasurer [nwmforch@gmail.com](mailto:nwmforch@gmail.com)



## 2019 NATIONAL GATHERING

### OLD LESBIANS

### RESIST AND PERSIST

**August 21-25 • in Columbus, Ohio**



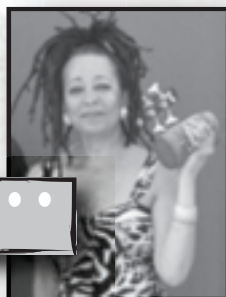
### Keynote Speaker

**Karen Williams** • • • • •

### Entertainers



**Alix Dobkin** • • • • •



**María Cora & Azúcar con Aché** • • • • •

### Old Lesbians Of Color Day

**Wed. August 21**

**10am-4pm**

Free and for  
Lesbians of Color only.

*The full Gathering  
opens to everyone  
later on Wednesday.*

**Further info:** <https://oloc.org>



## Artist Profiles



**Alexis Carreon** has performed for three decades as a viola soloist and with chamber and symphony orchestras. She has toured internationally and performed for four U.S. presidents, Her Majesty Queen Elizabeth II, The President of China, and at Oprah's 50th birthday celebration. Alexis has toured, performed and recorded with Aretha Franklin,

Bonnie Raitt, John Tesh, Rod Stewart, Tony Bennett, James Galway, David Foster, Wayne Newton, Suzanna Guzman, Barry Manilow, Herbie Hancock, Stanley Clarke and Chick Corea. Alexis performed at NWMF in Kay Gardner's *A Rainbow Path* in 2012, *Babe! An Olympian Musical* in 2017, and with the Festival Orchestra in 2018.



**Amanda Suckow** is a classical violinist who loves folk music and writes love songs on her ukulele. She grew up in Michigan and grew into herself in Honolulu. Amanda is a member of the Sheboygan Symphony Orchestra and plays in Milwaukee bands Brandenburg 6 and Tangled Lines. She has been teaching violin, viola, piano, guitar and ukulele for the past 15 years and currently

teaches music at Milwaukee Area Technical College, Milwaukee Sign Language School, and El Sistema Ravinia. She performed with the NWMF Orchestra in 2018.



**Brynn Albanese** began studying the violin at age four. She has been Concertmaestra for the Annapolis Symphony, the Boston Philharmonic, and the Tanglewood Festival Leonard Bernstein Memorial Concerts. She has played and toured with the Boston Symphony, Boston Pops, and Boston Pops Esplanade Orchestra. Internationally, Brynn played with the *Residentie Orkest* in The Hague, the Rotterdam Philharmonic, and the

*Concertgebouw* in Amsterdam. Currently in California, she is co-concertmaestra of the Symphony of the Vines and concertmaestra of Opera San Luis Obispo and Orchestra Novo. Brynn is a member of Café Musique world music ensemble. She performed with the NWMF Orchestra in 2018. Brynn has a remote recording business for film score writers and singer-songwriters, offers online violin lessons internationally, and offers a mobile workshop, Brynn Albanese's Violin Practice Technique Boot Camp. [www.brynnalbanese.com](http://www.brynnalbanese.com)



**Carol Rosing** is the principal bassoonist in the Beloit-Janesville Symphony and the Oshkosh Symphony, contrabassoonist in the Madison Symphony, and second bassoonist in the Wisconsin Wind Orchestra. She has performed with numerous orchestras and ensembles in the Midwest and internationally, including the NWMF Orchestra in 2018 and the

production of *Babe! An Olympian Musical* in 2017. She serves on the faculties at two campuses of the University of Wisconsin and at Beloit College and maintains a private teaching studio.



**Carly Calbero** was accepted to the Berklee College of Music, but even with financial aid and scholarships, couldn't follow that dream. So she opened her own recording studio in her bedroom and took up street performing in Seattle to build a name. Before winning the NWMF Emerging Artist competition last year, Carly won Seattle's "Battle of the Buskers" and placed as a finalist in the Rolling Stone Magazine "Street to Stage" search for the best busker nationwide. Her newest project is "Cascade Cascade" written with her wife, drummer Nika Wascher.



**Crys Matthews** is touring the country, winning songwriting competitions and getting extensive radio play with her blend of Americana, folk, jazz, blues, bluegrass and funk. She performed at Lincoln Center and was named grand-prize winner (from a pool of 5,000) in this year's NewSong Music Competition. She also won the People's Music Network's Social Justice

Songs contest at the 2017 Northeast Regional Folk Alliance. She has played the Sundance Film Festival, The Birchmere, The Hamilton, and Jammin' Java as well as BMI's Island Hopper Songwriter Festival, the Michigan Womyn's Music Festival, Folk Alliance International, 30A Songwriters Festival, Northeast Regional Folk Alliance and many more. Crys has found inspiration in her surroundings; from driving through the Blue Ridge Mountains to the compelling and heart-breaking love story of Richard and Mildred Loving. She just concluded the Singing OUT Tour with Heather Mae and JJ Jones. [crysmatthews.com](http://crysmatthews.com)



**Diane Heffner** is a Boston-based freelance clarinetist and teacher on modern and historical instruments. She plays with the Handel & Haydn Society; Arcadia Players; Boston Baroque Orchestra; Philharmonia Baroque Orchestra (San Francisco); Pacific Musicworks (Seattle); "Rumbarocco" Latin jazz-Baroque fusion ensemble;

Eudamonia, a Purposeful Period Band; Dinosaur Annex Music Ensemble; Alea III; and Solar Winds, among others. She is a member of Boston's only all-women big band, The Mood Swings Orchestra. Diane played with the NWMF Orchestra in 2018 and for the production of *Babe! An Olympian Musical* in 2017. Diane serves on the applied faculty at Tufts University and the All-Newton Music School. She holds a master's in music with honors at New England Conservatory of Music.

**CALL**  
**Diana Cook**

NWMF Auctioneer

Estate and Appraisal Consultation

**219-763-3741**

[Ladydi@megsinet.net](mailto:Ladydi@megsinet.net)

## Artist Profiles



**The DIVA Jazz Orchestra** is a high-energy ensemble of 15 women that performs all over the world playing contemporary, mainstream big band jazz composed and arranged to fit the individual personalities and styles of the musicians themselves. The inspiration for DIVA came from Stanley Kay, one-time manager and relief drummer for Buddy Rich. In 1990, he was conducting a band in which Sherrie Maricle was playing the drums. Stanley immediately recognized her extraordinary talent and began to wonder if there were other women players who could perform at the same level. By 1992, the band was based in New York and playing in the tradition of the historic big bands but with an eye towards today's progressive sound of originality and verve. [divajazz.com](http://divajazz.com)



**Elvira Kurt** is a Canadian stand-up comic and Second City veteran who has starred, hosted, or appeared in many TV shows and comedy specials. Her own specials have aired on Comedy Central, HBO, Showtime, E!, and Bravo. She created and produced *Popcultured with Elvira Kurt and Big Girl Now!*, her award winning one-hour CTV special. She co-created, hosted, and headlined *The Gayest Show Ever* and *Queer as Jokes*, CBC's first ever all gay comedy special. Elvira has appeared on *The Tonight Show with Jay Leno* and CBC's *The Debaters*. On MTV's LOGO, Elvira headlines *One Night Stand-Up* from Washington D.C. and hosts *First Comes Love* and *Cruising The Caribbean with Olivia*. She has guest starred on *Degrassi: The Next Generation*, hit the stage in the *Vagina Monologues* and is featured in several comedy films such as the multiple-award-winning *Laughing Matters...More!* Elvira also writes comedy for TV series and specials, most notably for Ellen DeGeneres on HBO.



**Emily Kimmel-Kurtz** is an Educational Sign Language Interpreter who received her education at Lansing Community College. For the last six years, she's worked interpreting K-12 during the school year. This is Emily's 4th year rocking out on stage at the National Women's Music Festival, and you can also catch her Interpreting at the Framily Reunion. Emily and her wife Stephanie

live in Portage, Michigan. This year was filled with both sweet and sour for their family as they had to put down their beloved dog Daisy while simultaneously welcoming their first child, Ezra Lee on February 25th. His parents and Jazmine the cat are overjoyed with love. When Emily is not working she is snuggling with her son or partaking in some type of art project like welding, wood working, crocheting, painting or ceramics.



**Gaye Adegbalola** is a multi-music award winner and a founding member of Saffire-The Uppity Blues Women (1984 – 2009). She has 15 recordings to her credit and is featured in 3 DVDs including the recently released *The Old Black Dyke Show*. The Wild Rütz CD, *Is It Still Good to Ya?*, is comprised entirely of Gaye's original songs. A former Virginia State Teacher of the Year (8th grade science), she was named OUT Virginian in 2011 and one of the 100+ LGBTQ Black Women You Should Know in Herstory in 2011. Gaye sees herself as a contemporary griot (a storyteller, historian, poet and musician) keeping history alive, delivering messages of empowerment, ministering to the heartbroken, and finding joy in the mundane. She presented a pre-festival workshop on activism this year and received the NWMF Kristin Lems Social Change Award in 2018. [adegbalola.com](http://adegbalola.com)

### Heather Mae with JJ Jones



**Heather Mae** writes and performs pop music that has won the Songwriter Showcase at the Rocky Mountain Folks Festival, was the People's Choice Award winner of the Wildflower Festival's Singer-Songwriter Showcase, and made her a finalist in the Kerrville New Folk Competition, among other triumphs. As her star began to rise, Heather was diagnosed with nodules on her vocal cords. With her future suddenly in limbo, she was forced to re-evaluate her career and life. "It was having to sit in silence that changed me. I hadn't ever used my voice for good and that became my mantra as I recovered," she says. Now she writes and sings music for those who need an anthem and doesn't shy away from tackling topics not often heard in pop music. Her newest album *I Am Enough*, reached #58 on the iTunes Pop Charts. She was part of the Singing OUT Tour with Crys Matthews and JJ Jones.



**JJ Jones** joined her first band while attending high school at the Seattle Academy of Arts. After graduating college with a neuroscience degree, her long-standing love of acoustic music eventually lead her to play with singer-songwriters and it was then that she started to be known for her signature style. In 2010, she joined the folk-pop band Girlyman. In 2015, JJ graduated from Berklee College of Music's drum performance program. In addition to touring and recording, JJ gives private drum lessons via Skype to students all over the country and volunteers at girls' and ladies' rock camps across the U.S., teaching, coaching, and facilitating workshops. She is also the Tech and Gear Review Editor for *Tom Tom Magazine*, the only magazine in the world dedicated to female drummers. She recently completed the Singing OUT Tour with Heather Mae and Crys Matthews.

**SAVE THE DATE**  
**JULY 2-5, 2020**  
**45TH NATIONAL WOMEN'S**  
**MUSIC FESTIVAL**  
**WE GOT BIG PLANS!**



## Artist Profiles



**Indigie Femme** is the duo Elena Higgins and Tash Terry. They weave together their cultural matrilineages, Diné (Black Mountain, Arizona, USA) and Maori, Samoa (Aotearoa, New Zealand), with their fusion of cajun drum, medicine drum, djembe, guitars, harmonica and voices. [indigiefemme.com](http://indigiefemme.com)

**Elena Higgins** was born in Aotearoa (New Zealand) and raised in a *pakeha* (white) foster family in which she regularly visited her Samoan *matrilineal aiga* (family) and her Maori *whanau* (family). In 1996 Elena, migrated to Australia where she taught in public and private schools. There she found her voice and passionately pursued her music with the love and support from the community on Magnetic Island. In 2006, Elena moved to the U.S. to pursue her musical talents. Supporting Native American gatherings and circles, she found her way to New Mexico. In August of that year, Elena met Tash and a few months later, Indigie Femme was born.

**Tash Terry** was born into the *Todich'ii'nii* (Bitter Water) clan, made from the *Bilagaana* (French and Irish), and raised on the Navajo Nation (Dinetah). She insisted her mother buy her a guitar when she was 11 and it has never left her side. Native mentors gave Tash encouragement and instruction in music and songwriting. She is involved in the Native/Deaf and Hard of Hearing community and is an associate free-lance American Sign Language interpreter. Her education at the Institute of American Indian Arts introduced Tash to other Native perspectives. She has been involved in Native theater, scriptwriting, directing, and acting. Some of her works have been produced in Santa Fe, New Mexico. She believes in collaboration and seeing through the eyes of other peoples and cultures.



**Jamie Anderson** has played her original songs in hundreds of venues in four countries, including forty-seven U.S. states and three Canadian provinces. She jokes that she's easily bored so she has recorded just about every style except opera and only because it's usually in German or Italian. Her eleven recordings include the 2019 release *The Truth Appears*. Jamie's music has been featured on *Good Morning America*, the *Dr. Demento* radio show, NPR's *Car Talk*, and stations all over the world. In addition to solo shows, she performs with Deidre McCalla and Dianne Davidson as "We Aren't Dead Yet." Jamie's memoir, *Drive All Night*, was published in 2014. Her second book, *An Army of Lovers: Women's Music of the Seventies and Eighties*, is available on Goodreads. Her extensive writing credits include book chapters, articles and CD reviews in *Acoustic Guitar*, *Curve*, *SingOut!* and more.



**Jennifer Berezan** is a singer/songwriter, producer, and activist. Her work is based on her lifelong involvement in environmental, women's, and other justice movements and her interest in Buddhism and earth-based spirituality. Jennifer is a leading voice in music and healing throughout North America and

Europe and is a producer of large-scale multi-cultural ecstatic musical events. Her many recordings include the meditative *She Carries Me* with

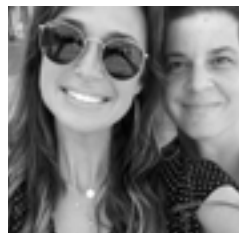
the spoken voice of Olympia Dukakis; *Returning*, a cross-cultural chant-based composition recorded in a 6000-year-old oracular underground sound chamber on Malta; *Praises for the World*, a large-scale theatrical piece involving dancers, poets, actors and activists. Performances have included Alice Walker, Gloria Steinem, Olympia Dukakis, Eve Ensler, Wilma Mankiller, and Tuck and Patti; and *In these Arms, A Song for all Beings*, a long-playing meditation based on the Buddhist practices of loving-kindness and compassion. Jennifer teaches at the California Institute of Integral Studies and is based in Berkeley, California. [edgeofwonder.com](http://edgeofwonder.com)



**Jenny McKittrick** is a native Madisonian. She is a certified interpreter in Wisconsin and nationally. She enjoys interpreting in all kinds of situations including medical, educational, community, and entertainment settings. For over a decade she has been providing sign language interpreting services as an independent contractor in the Madison area. [jennymckittrick@yahoo.com](mailto:jennymckittrick@yahoo.com)



**Jori Costello** is a singer, songwriter, multi-instrumentalist, artist, actress, dance DJ, radio host, festival emcee, and school bus driver. In her third decade of performing, Jori is best known for her work in Big Bad Gina. She continues to collaborate with chakra rocker Ginger Doss and with Angela "Oxygen" Edge. One day, she was surprisingly smitten by the ukulele and wants to share the joy of this tiny, portable music maker. We welcome her direction of the Women's Ukulele Orchestra. For music downloads and videos, TV projects and more: [www.joricostello.com](http://www.joricostello.com)



**Julie Goldman** has been doing stand-up comedy since she was fifteen. Now she headlines all over the country in comedy clubs, theaters, colleges, PRIDE events and cruises. She has been seen on *Live at Gotham* on AXS TV, Bravo's *The People's Couch*, and as co-host of *Vanderpump Rules After Show*. She hosts the new podcast *Dumb Gay Politics* with her partner Brandy Howard. Julie has guest starred on numerous television shows including Fox's *Bone* and *The Mindy Project*, and HBO's *Curb Your Enthusiasm*. She also appeared as a contestant on the second season of *RuPaul's Drag U*. On college campuses, Julie works directly with LGBT groups, Hillels, Interfaith groups, Women's Studies programs, and Gay Student Associations to create an interactive program that brings groups together in humor. She and Brandy launched their new workshop/lecture entitled "Humor, Hypocrisy and Holding Yourself Accountable" at this year's Power of One Conference. [julieandbrandy.com](http://julieandbrandy.com)



**Karen Williams** started doing stand-up comedy in the 80s because, she says, "it was something I could do that didn't cost anything." She is the Founder and CEO of HaHA Institute. Karen graduated summa cum laude from Cleveland State University with a personally-designed major in Humor and Healing. She earned a Master of Education degree from CSU's Adult Learning & Development program.



Karen taught Stand-Up Comedy in the Dram: CSU. She is also the creator and facilitator of the Humor-at-Large Workshop Series and has served on the boards several organizations, including the National Black Justice Coalition. Karen is featured in the comedy documentary *We're Funny That Way* and was a nominee for the GLAMA award for her CD *human beings: what a concept*. Her writings appear in numerous anthologies. She is a certified provider of courses in communication skills and diversity for the California Board of State and Community Corrections. [hahainstitute.com](http://hahainstitute.com)



**Laura Kolb** first interpreted at NWMF in 1983. She feels blessed to see ASL in Deaf hands every day. She is the creator and director of Deaf THINK POSITIVE, a space for healing and recovery from addictions and trauma. Please visit the website: [deafthinkpositive.com](http://deafthinkpositive.com) and the Think Positive Facebook page.



**Laura Medisky** is a founding member of the Black Marigold wind quintet, and a Director of the LunART Festival in Madison. She performs in the Wisconsin Chamber Orchestra, and the Madison, Elgin, and Rockford Symphony Orchestras. She also plays for Fresco Opera, Capital City Theatre, Bel Canto Chorus, con vivo! Chamber Ensemble, and Oakwood Chamber Players. She performed with the NWMF Orchestra in

2018. Laura teaches Alexander Technique and oboe master classes at music institutions, festivals and conferences. As owner of Medisky Oboe Studio LLC in Madison, she is gaining national recognition for her teaching, and was recently a featured guest on the podcast "Double Reed Dish." Currently teaching at Edgewood College, Her album, *Personalities: 21st-century American Music for Oboe*, is available on the Centaur Records label. [lauramedisky.com](http://lauramedisky.com)



**Laurie A. Jarski** is a professional cellist in the Presence of Three Trio, Red Willow Dream, and the Battle Creek Symphony. She has composed commissioned works for orchestra, chamber orchestra, choir, and a variety of chamber ensembles. Laurie performed with the NWMF Orchestra in 2018 and *Babe! An Olympian Musical* in 2017. Her most recent compositions include "God Rest

Ye! Orchestral Renderings"; "Funky Blues for Cello Quartet"; "The Star to Every Wandering Bark" for choir, chamber orchestra, and percussion; and "Travel Modalities" for 16 celli. Laurie is owner of Broughton Music Center and the Northville Center for Music & Art. [broughtonmusiccenter.com](http://broughtonmusiccenter.com)



kg lang

**Kristen Goodman, Cindy Minnis, and Laura McMurray** played together casually for several months. Sensing the potential magic in the team, they decided to make it official in the spring of 2017. This St. Louis-based acoustic trio is a tribute to the women's folk rock genre and is touring regionally with original tunes and a few songs by their quasi-namesake, kd lang. [Facebook.com/kglangstl](https://www.facebook.com/kglangstl)



**Lisa Vogel** applied her working class roots to her newfound passion for women's community at age 19 and founded the Michigan Womyn's Music Festival in 1976. Under Lisa's leadership as the festival producer for its entire run, Michigan evolved from a rustic three-day primitive camping event into a week-long state-of-the-arts music and cultural festival that gathered women from every state and province and dozens of countries throughout the globe. It was an actual living women's town infused by feminist values, created entirely by women's

ingenuity, labor, and skill. The pride that the festival engendered continues in the many families, events, and communities that have grown from its roots. Today, Lisa's work continues to touch and connect the lives of the tens of thousands of women who called Michigan home - as well as for women who never made it to the Land but still saw the Festival as a beacon of feminist possibility.



**Lourdes Pérez** is a Puerto Rican-born composer, poet, oral historian, vocalist, and guitarist. She is also one of few female *decimistas* (writers of a specialized form of Spanish poetry). Her music has been characterized as opera of the people that honors her Puerto Rican mountain roots and the legacy of Spanish/pan-Latin American *nueva trova* or *nueva canción*.

She has performed internationally from war zones to performing arts centers and has collaborated with diverse artists for 26 years. In 2006, she was one of the first five composers (and the only woman) to be awarded the unrestricted United States Artist Fellowship for Music. Lourdes' works include 13 CDs, scores, and soundtracks for dance, theater and film and two oral history books with original music CDs. She is openly Lesbian and has written songs about Lesbian experience. Lourdes has lived and traveled with her partner and collaborator, Annette D'Armata, since 1991. [lourdesperez.com](http://lourdesperez.com)



**Maria I. Hernandez** is an activist, advocate, and leader in many organizations and communities involving Latinos, youth, women, GLBTQ, and Deaf/HOH (including allies). She loves traveling the world, and has visited several countries in Europe, South America, Central America, and North America. For almost 20 years Maria has

**SAVE THE DATE  
JULY 2-5, 2020  
45TH NATIONAL  
WOMEN'S MUSIC FESTIVAL**

## EVENTS NOT TO MISS!

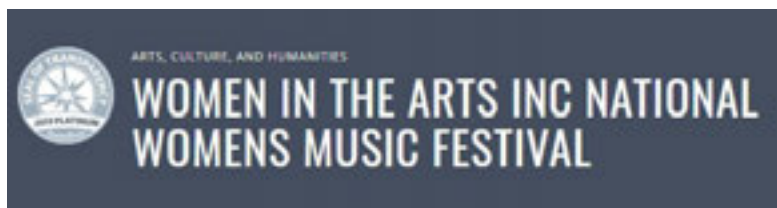
- ✓ DINE WITH THE ARTISTS, SPECIAL MENU, LIMITED SEATING. MAKE YOUR RESERVATION AT REGISTRATION
- ✓ RELAXING IN THE LIVING ROOM LISTENING TO THE EMERGING ARTIST CONTEST, STORYTELLING, OPEN MICS AND ARTISTS JAMS
- ✓ NEED SOME FRESH AIR? SIGN UP FOR THE GEOCACHING. WIN A 2020 FESTIVAL PASS
- ✓ SHORT TAROT READING BY GAIL AT REGISTRATION, FUNDRAISER FOR THE FESTIVAL.
- ✓ CLASSICAL MUSIC ALL WEEKEND - SPOTLIGHT STAGE, HOTEL ATRIUM AND GREENWAY ROOM.
- ✓ DUMB GAY POLITICS! LIVE! PODCAST WITH JULIE GOLDMAN & BRANDY HOWARD. SPECIAL GUEST, LISA VOGEL. FRIDAY @ 11:30A IN DEIDRE
- ✓ DANCE TO THE MUSIC OF KG LANG - A TRIBUTE TO WOMEN'S FOLK ROCK BAND FRIDAY RIGHT AFTER SHEROCK STAGE
- ✓ FEATURED SPEAKERS LISA VOGEL & ELVIRA KURT SATURDAY, 10AM SHEROCKS STAGE
- ✓ SILENT AUCTION (CHECK ON BIDS OFTEN) FINAL BIDS @ 2PM SAT.
- ✓ LIVE AUCTION ON SATURDAY @ 3:00PM IN WISCONSIN ROOM
- ✓ THE DIVA JAZZ ORCHESTRA ON SUNDAY AFTERNOON ON THE SHEROCKS STAGE
- ✓ EXPLORE NEW IDEAS; HAVE A CONVERSATION WITH SOMEONE WHO SEEMS DIFFERENT FROM YOU.

## SHOPPING LIST

- ✓ FESTIVAL T-SHIRT
- ✓ LONG-SLEEVE SHIRT FOR FALL WALKS
- ✓ BUY CHOCOLATE
- ✓ BUMPER STICKER
- ✓ BUY SOMETHING FUN FOR MYSELF
- ✓ BUY WOMEN'S MUSIC & VIDEO AT GOLDENROD
- ✓ BUY GIFTS IN MARKETPLACE FOR
  - DOG SITTER
  - HOUSE SITTER
  - SISTER/DAUGHTER
  - WIFE/GIRLFRIEND



**LIVE! Podcast**  
 Friday-11:30am in Deidre.  
 With special guest Lisa Vogel



## Live Auction

Saturday 3-5pm on the Spotlight Stage (Wisconsin)



One week stay at The Princess & the Sea Cottage, donated by Lucie Tremblay

Large, 6 Bedrooms Cottage! Wonderful for getting the family and friends together. Clean, comfortable, beautiful and perfectly located on the water. This lovely Victorian home is 150+ years old. She was originally built by Captain John Beardsley who navigated the waters of the Bay of Fundy. The home has been updated while still maintaining its charm. A large wrap-around porch with comfy seating offers an inviting place to relax and watch the water.



4-day stay at Duneswood donated by Deb Rettke

A safe place for everyone - friends, family, individuals and groups year 'round! Bike rentals and park passes available. Owner lives on site, 7x24 coverage for our guests  
 7194 S Dune Hwy (M-109) ~ Empire, MI 49630 (231) 668-6789 DuneswoodReservations@gmail.com



2 pairs of tickets to a  
 Chicago Cubs Baseball  
 (donated by Sue Perterson)



## Artist Profiles

been a prevention educator for the City of Chicago Mayor's Office for People with Disabilities' Substance Abuse Prevention Program for Deaf and Hard of Hearing (SAPPD). She visits public schools in Chicagoland, where she provides workshops to students on abstinence from alcohol, tobacco, and other drugs.



**Nan Washburn** first came to national attention as a co-founder, Artistic Director, and Associate Conductor of the San Francisco-based Women's Philharmonic. A leading authority and advocate for orchestral works by women, she has won awards for her engaging performances and fresh approach to concert programming. Nan has received

the Distinguished Service Award from New York Women Composers; the Outstanding Local Hero Award from KQED, San Francisco; and the Jeanine C. Rae Award from NWMF. Nan is in her 19th season as Music Director of the Michigan Philharmonic, which has received several prestigious grants and honors. She has conducted often at NWMF, including Kay Gardner's *Ouroboros* in 1994 and 2012, Mary Watkins' *The Initiate* in 2016, and the orchestra concert in 2018. Nan developed today's program with the ensemble artists to provide the listener with a wide array of women composers. [www.nanwashburn.com](http://www.nanwashburn.com)



**Nancy Scott** is a long-time performer and who been instrumental in encouraging other artists and promoting women's music. She hosts a monthly singer-songwriter circle at Patsy's Café in Austin and encourages new performers in the Living Room at NWMF every year. For over 35 years she has been creating songs ranging from folk to blues blended with a touch of country that draw upon

her daily experiences and express her soul. She was selected for NWMF's open mic in 2004 and performed on the Spotlight Stage in 2007. In addition to her solo gigs, Nancy plays in the Peoples Orchestra of Austin, and joins other musicians at Texas women's prisons, benefits, and kids' shows. Her most recent recording is *Inner Peace*. She received the NWMF Jane Schliessman Award for Contributions to Women's Music in 2018.



**Natalia Zukerman** is a musician, painter, and educator who writes, plays, teaches, and paints in Brooklyn, NY. She has released seven independent albums and toured internationally as a solo performer since 2005. Her music is on the soundtrack of several seasons of *The L Word* and ABC Family's *Chasing Life*. In February, 2017, Natalia became a

Cultural Diplomat for the U.S. Department of State, playing concerts and conducting workshops throughout Africa with her group The Northern Lights. In May, she was the artist in residence at the cell theatre in New York City where she developed her multimedia one woman show, *The Women Who Rode Away*. She is currently recording the soundtrack of the show and touring it throughout North America. Alongside her touring career, Zukerman continues to paint private and public murals as well as illustrate children's books, design and paint sets for plays in New York City and paint private portrait commissions. [nataliazukerman.com](http://nataliazukerman.com)



**Nia & Ness** are a black, lesbian, dancer-poet performance art duo based in Brooklyn, NY. The duo founded their company in 2016. They have performed at multiple venues in New York, New Jersey and Pennsylvania, sharing their work that aims at a deeper understanding of their co-reality through intense

investigation of their individual identities. They are recipients of the BAX Summer 2017 Space Grant; and the winners of the 2017 National Women's Music Festival Emerging Artist Contest. Nia Shand is a proud BFA dance graduate from Temple University. Immediately after graduation she began dancing in Germany and France with DAGADA dance company. Ness White, a journalism graduate of SUNY Plattsburgh, freelances as a writer for the California-based magazine *Việt Tide*.

**Paving The Way: Black Women Who Inspire Across The Generations.** These featured speakers return to the festival for the third year to celebrate unknown or little-known Black women in history. Each of the women received the Sarah Dwyer WIA Board of Directors Special Appreciation Award in 2018.



**Carla Carter, Ph.D.** is a writer, performance artist, and educator who was born during the 60's era of radical free love juxtaposed with the civil rights movement and raised during the second-wave feminist movement. She is no stranger to unapologetically living freely. Her raw and piercing poetry has won National Slam titles, the Fifth Annual

Gwendolyn Brooks Open Mic Competition, and the Behind Our Mask Annual Slam. Her first book, "Body Language," was nominated for a Lambda Literary Award. Her one-woman show is titled, "*Living Large in a Shrinking America*." She has studied goddess dances of many countries and developed a contemporary approach for women to become more present in their bodies. [ccarterpoet.com](http://ccarterpoet.com)



**Jorjet Harper** is a writer, artist, editor, and musician who lives in Florida and has been an integral part of Chicago's Lesbian community since the 1970s. She writes for the LGBT media, including *Windy City Times*. In the 1980's, she wrote for *GayLife*, *Blazing Star*, and *HOT WIRE: The Journal of Women's Music and Culture*. Her syndicated columns have been collected in *Lesbomania:*

*Humor, Commentary and New Evidence that We Are Everywhere*, and its sequel, *Tales From the Dyke Side*. Jorjet performed for many years as a singer/songwriter. She has edited several books, including *Out and Proud in Chicago* and Tracy Baim's *Obama and the Gays*. Jorjet's visual art includes silversmithing, photography, watercolors, and oils. She was inducted into the Chicago Gay and Lesbian Hall of Fame in 1998.





## Artist Profiles

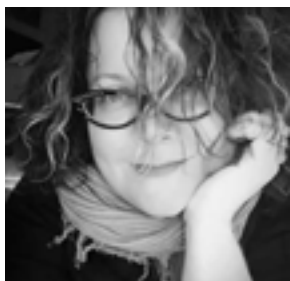


**Nedra Johnson** is a singer/songwriter and multi-instrumentalist born and living in New York City. Her unique style of guitar playing is informed by her many years as a professional bassist and keeps her live solo acoustic performances more on an R&B trip than what one might expect of a "girl with a guitar." Nedra has performed internationally at jazz, blues, pride and women's music festivals as a solo artist

and as a tuba player/vocalist with her father Howard Johnson and his group, Gravity. Her recordings include *Testify* and *Nedra* on her label, Big Mouth Girls, and *she is included on a day most swell: a musical benefit for the susan frazier medical fund*. Her blog, "Big Mouth Girl," is at [bmgnedra.wordpress.com](http://bmgnedra.wordpress.com)



**Rani Biffle-Quimba** has studied and performed as a drummer with Wahu for several years. She has also attended workshops by Ubaka Hill and Nurudafina Pili Abena, among others, and is considered an accomplished drummer on the djembe and dunun. Rani was a member of the NWMF's first drum chorus and has participated in this festival as a workshop presenter, assistant facilitator for drum jams, and in performances with Sistah Ngoma. She has also performed with Judy Piazza, the Sirens, Nuru, Wahu and others at the Ohio Womyn's Music Festival, and Wiminifest. Rani is a certified Zumba® instructor.



**Renée Janski** cannot remember life without singing and music. She began playing piano at the age of four and played in her school orchestra. She earned a degree in Opera from the University of Central Arkansas and has performed internationally. She has played nationally with various rock, bluegrass, and jazz ensembles, like Big Bad Gina. Renée

has owned her own music studio for over 25 years, teaching piano, bass, fiddle, and voice. Renée's active spiritual life has a huge influence on her work and music, as does her Roma ethnicity. She resides in Fayetteville with her wife, RJ. This is her third year as director of the Festival Chorus.



**Sarah Gillespie** holds a doctorate of musical arts in horn performance from the University of Wisconsin-Madison. Her doctoral research was recently published in the journal *Medical Problems of Performing Artists*. She hosts a private studio of students aged 9-90 and believes that music education is for everyone and for life. Sarah is acting principal horn of the La Crosse Symphony Orchestra and performs with many other symphonic and

pit orchestras in Wisconsin and Iowa. She performed with the NWMF Orchestra in 2018 and has coordinated this year's Women Composers Recitals. Sarah co-founded the Arête Brass Quintet and the Odyssey Wind Quintet. She also is an advocate for women composers and has premiered works at NWMF and the International Women in Brass Conference.



**Suede** knew early on that she wanted to make singing her life. Her natural talent culminated in her first "bar gigs" while she was still in high school and was completely self-taught until her college years. She then began formal training in classical voice and trumpet, obtaining a Bachelor of Music degree before launching her musical career shortly after graduation. Suede plays piano, guitar and trumpet, but voice is her first instrument. She has headlined with Melissa Etheridge and Sarah McLachlan, opened for Joan Rivers, and played clubs like New York's Birdland, San Francisco's Feinstein's, Seattle's Triple Door, Washington DC's Blues Alley, Boston's Scullers Jazz Club and more. She sings original material, pop, blues, and jazz standards solo, with small combos, or with her nine-piece Dangerous Big Band Horns. Suede returns to NWMF with Tomoko Ohno, piano, Noriko Ueda, bass, and Sherrie Maricle, drums. [suedewave.com](http://suedewave.com) [facebook.com/suedewave](https://facebook.com/suedewave) and [twitter.com/suedewave](https://twitter.com/suedewave)



**Sunny Pfifferling-Irons** is a licensed ASL interpreter, level BEI-2. She is celebrating her 20th year of interpreting at NWMF! She has recently retired from her full-time gig of educational interpreting and will work a more leisurely schedule doing VRS and freelancing. She lives on a small farm in Indiana with her wife Amy and daughter London. Her colleague Emily Kimmel-Kurtz suggests that when you see Sunny you might congratulate her on her retirement after many years of dedicated hard work in the school systems.



**Susan Gaeddert** completed a doctorate in musical arts in collaborative piano at the UW-Madison School of Music and gave birth to her second child on the same day. That year, she was a winner in the Shain competition for piano and woodwind duos and premiered John Harbison's *Vocalism I and II* at Pepperdine University. She studied harpsichord for several years and frequently plays continuo in local performances. Susan was the pianist for Mary Watkins' *The Initiate* at NWMF in 2016, *Babe! An Olympian Musical* in 2017, and with the NWMF Orchestra in 2018. Susan is a freelance accompanist, teaches private piano lessons, and adjudicates youth piano competitions and festivals. [susangaeddert.com](http://susangaeddert.com)



**Tret Fure** is a multi-talented singer-songwriter, entrepreneur, painter, and cookbook author who has been performing for 49 years. Her latest and 16th CD, *Roses in November*, was high on the folk charts where she was the #2 artist and her song "Lessons From Home Plate" reached number one. She has won the South Florida Folk Festival Singer/Songwriter Competition in 2 categories, the NWMF Jane Schliessman Award, the NWMF Jeanine C. Rae Award, and was voted the "Pride In The Arts Favorite Female/Lesbian Musician." In 2017, Tret took second place in the Musicians United To Protect Bristol Bay song contest with her song "The Fishermen of Bristol Bay" from her CD "Rembrandt Afternoons". Her song "Freedom" from the same album has been arranged for choir and is performed across the country. Tret

## Artist Profiles

also markets her own line of clothing named Tomboy Girl, after her popular song, teaches guitar and songwriting, paints pet portraits, and has published a cookbook, *Tret's Kitchen*.



**Valerie Coleman** is among the world's most played living composers. She began her music studies at the age of eleven and within three years had written three symphonies and won several local and state performance competitions. Her works include flute sonatas that recount the stories of trafficked humans during the Middle Passage, orchestral and chamber works based on nomadic Roma tribes, scherzos about moonshine in the Mississippi Delta region, and motifs based on Morse Code. Her composition, *Umoja*, was listed by Chamber Music America one of the "Top 101 Great American Ensemble Works". She was the founder, composer and flutist of the Grammy® nominated Imani Winds. Valerie is regularly featured as a performer and composer in many of the world's great concert venues and conservatories. She has conducted masterclasses, lectures and clinics across the country for over 20 years. [vcolemanmusic.com](http://vcolemanmusic.com)



**Wahru Cleveland** is considered an accomplished drummer on the djembe, ashiko, bongos, congas, and dunun. She is the founder, director, and leader of Sistah Ngoma, a professional multicultural women's drum group, and the Columbus Community Drummers. Wahru has facilitated drum circles for NWMF for over sixteen years and conducted the Festival Drum Chorus since 2002. She is known for her ability to get everybody drumming. Wahru is

the co-coordinator of NWMF's MultiCultural/Women of Color Series. [drumwahru.weebly.com](http://drumwahru.weebly.com)

**World On Fire** is an ensemble music-theatre performance that reconnects poetry to the music from which it was once inseparable. The collaborators use voice, language, rhythm, melody and imagination to create a space for celebration and empowerment in the face of climate change. The ensemble members are recipients of the 2019 NWMF Kristin Lems Social Change Award.



**Barbara Borden** is a percussionist and drummer who began drumming at age ten. She is a composer and recording artist (*Beauty in the Beat, All Hearts Beating*); performs solo and in collaboration with other musicians and artists, including the all-women's jazz quintet, Alive!; and teaches lessons workshops. Barbara is the subject of the acclaimed documentary, *Keeper of the Beat: A Woman's Journey Into the Heart of Drumming*, which was recently screened on national PBS stations. [barbaraborden.com](http://barbaraborden.com)



**Naomi Newman** has been a concert singer, playwright, director, actor, and psychotherapist. She served for 25 years as a founding member, co-artistic director, writer, and performer with of San Francisco's A Traveling Jewish Theater. Her one-woman shows have included *Snake Talk: Urgent Messages from the Mother, Rose, and Model Apartment*. Naomi's television credits include *Star Trek, Ben Casey, Wild Wild West*, and *Korg: Seventy Thousand B.C.* For her contributions to the cultural life in the Bay Area she has received a Tikkun Award, the Mill Valley Creative Achievement Award, and Theatre Bay Area's Community Leadership Award. A book containing an oral history of her life and career is now part of the Legacy Collection of The San Francisco Performing Arts Museum.



**Susanne DiVincenzo** is a founding member of the all-women jazz quintet, Alive!, who have performed at many National Women's Music Festivals. She also played bass in the NWMF orchestra for Mary Watkins' *The Initiate* in 2016 and in concert in 2018. Suzanne plays cello and acoustic bass in the Bay Area Rainbow Symphony as well as many classical ensembles. She teaches with the ELM (Enriching Lives through Music) Program that provides musical instruction and experience to Hispanic children. She is the bass instructor with the Montclair Women's Big Band Girls' Jazz Camp at the California Jazz Conservatory. Suzanne continues with Alive! in performances and workshops. This year she appears with World On Fire as well as the NWMF Women Composers Series Presents concert. [alivejazz.com/susanne-divincenzo](http://alivejazz.com/susanne-divincenzo)

# Broughton Music & Art Center

We offer a full range of Musical Instruments & product, Lessons, Rental, Repair Services & Performance venues!

Visit us at NWMF Marketplace

Join our Mailing list: For a chance to win a UKE!

Lessons \$25 per 1/2hr

West Michigan Location

Great Selection of Ukuleles!

Two Michigan Locations:  
4528 W KL Ave., Kalamazoo, MI  
141 N. Center St., Ste. 102 Northville, MI  
(269) 375-2808 & (248) 374-5596  
[www.broughtonmusiccenter.com](http://www.broughtonmusiccenter.com)

*Dine with the Artists*

**ALL WEEKEND**

**SEE PAGE 32 FOR AVAILABLE ARTISTS & MENU.**

**MAKE YOUR RESERVATION AT THE REGISTRATION DESK**



# INVEST. PLAY. CREATE.



## BRAVO | 10%<sup>off</sup>

A Single Item | Savings Up to \$100

Use code BravoQ3. Valid online and in-store through 9.30.19. Not valid with other discounts or institutional purchases, special orders or previous transactions. Excludes method & contest music, bundles, vintage, imports, clearance, consignments, gift cards, lessons, repairs, rentals & select band instruments. Other exclusions may apply.

# HEID MUSIC

APPLETON | GREEN BAY | MADISON | OSHKOSH | STEVENS POINT | HEIDMUSIC.COM



## Workshop & Recitals Profiles

**Allison K. Brown, LCPC** has been an adjunct professor, associate director, and invited speaker with organizations such as the University of Chicago, the American University in Cairo, and Advocate Children's Hospital. Her work addresses child development, social emotional learning, trauma, and other clinical mental health needs. She maintains a private psychotherapy practice in Chicago.

**Amor Y Luz** is the professional acoustic duo of Kutasha Silva and Amy Vitro. They weave together classical, Latin, Caribbean and indigenous music of the Americas composed by women. Their cello, woodwinds, and percussion combine with vocal arrangements designed to inspire. Although they live miles apart, their music reflects a profound heart and musical connection meant to move and inspire.

**Amy Vitro** is a multi-instrumentalist, vocalist, and longtime student of West African drumming traditions. She is a shekere performer, teacher, and maker in the Washington, DC area and a member of several musical groups, including: Batalá Washington, an all-women Afro-Brazilian band, La Marvela, an all-women band that highlights the richness of Colombian Afro and Indigenous rhythms, and Bele Bele Rhythm Collective, an all-women West African drumming group.

**Angie Haze** is an award-winning singer/songwriter who shares her story about how music shaped her ability to cope and trust in vulnerability after childhood sexual abuse. Drawing on her journey of strength, healing, and hope, Angie will share her use of storytelling, musical performance, and daily practice tools as outlets for empowerment and solace through the gifts of art. [theangiehazeproject.com](http://theangiehazeproject.com)

**Anne Dornberg** works as a therapist at a community health center where she specializes in LGBTQ concerns and diversity/inclusion work. She is passionate about social justice and has facilitated many discussions about LGBTQ concerns, white privilege and cultural competency.

**Dr. Annette D'Armata** is a lesbian naturopathic physician, oral historian, composer and music producer. She practices integrative medicine and telemedicine in Alaska and Arizona and has collaborated with her partner, Lourdes Pérez, in recording, performance and activism for 28 years.

**Becky Thacker** started hanging out at the local fitness center with Harriet Clare and Eugenia Fernandez, and they're in love with line dancing. They dance on beaches, in the

carport, and anywhere else there's reasonably level space. They're not great at it. Who cares?

**Beth York, PH.D, MT-BC** returns to NWMF with a musical presentation about her collaboration with domestic violence survivors. Beth performed her work *Transformations* at NWMF in 1985 with a dance company and ensemble. Her brand-new CD, *Finding Home*, with Phyllis Free, Barb Ester, Roberta Greenspan, Diane Matheson, and Alison Hughey (The Lovebirds) is available at the Goldenrod booth in the Marketplace

**Bonnie Wagner** has served on OLOC's National Steering Committee for many years. She has worked in education and in the battered women's movement. She is a consummate volunteer and organizer.

**Rev. Boye Nagle** is an Interfaith Minister, Drum Guardian, feminist Poet and Essayist. She is committed to giving voice and witness to butch women both in her private practice and her poetry. She lives in Austin, TX with the love of her life Sally Jeaux.

**Christine Powers** has been arranging singles events at this festival for years. She has a master's degree in recreation and knows how to get people networking. A recently retired college professor, Christine is passionate about helping others grow, create, learn, and explore. An Iowa native, this will be Christine's sixth festival visit.

**Eileen Hamper** was born in Parma, Ohio, and learned all about painting at her first job at Sherwin Williams. After a move to California and a career in biosciences, she retired and started doing home repair. She loves to paint!

**Eugenia Fernandez** is a retired college professor from Indianapolis. She has been involved with the Festival for over 25 years and once served as Coordinator for the Business Series.

**FireHawk Stewart** is a member of the Red Tent Clan of Dianic priestesses, dedicated to serving the Goddess and empowering Her womyn.

**Forrest Mainville** wants to encourage and help others to show up authentically, open to new possibilities. and go deeper into their stories. They are writing their memoir about embracing a new gender identity in their 60s. Forrest lives in Minneapolis and works as a teacher/trainer, spiritual director and dog sitter and walker. Pronouns used are they/them/their.

**Harriet Clare** started hanging out at the local fitness center with Becky Thacker and

Eugenia Fernandez, and they're in love with line dancing. They dance on beaches, in the carport, and anywhere else there's reasonably level space. They're not great at it. Who cares?

**Harvest Brown** is a member of the Red Tent Clan of Dianic priestesses, dedicated to serving the Goddess and empowering Her womyn.

**Holin Blackmoon** is a member of the Red Tent Clan of Dianic priestesses, dedicated to serving the Goddess and empowering Her womyn.

**Jamie Mayo** is a storyteller and workshop leader fascinated with the power of story. She is active in the National Storytelling Network and the Healing Story Alliance and has created and performed personal stories for the Kansas City Fringe Festival.

**Jane Skowron's** passion is helping individuals improve their health and well-being through hand and foot reflexology. She is well respected in her field; often getting referrals from a local naturopath. She resides with her husband near Milwaukee, Wisconsin.

**Katherine Wood** is the chapter coordinator for Colorado OLOC, a shamanic practitioner, and owner of Vibrant Tree Ministry. She is an ordained minister and has a master's degree in education.

**Kathy Kemnitz and Carrie Staley** have been helping people have fun and feel open to create vulva cakes (vajoughnuts) at Planned Parenthood fundraisers, Vagina Monologues and Michigan Women's Fest for several years. It has been amazing to have people of all ages, shapes, abilities and sizes come together to be yoni playful. We have sometimes been a smidgen jealous of the young girls who have been able to be way more open about this activity than we would have been at their age, but so grateful to be able to learn from them and to be part of their path.

**Kristi Hallisy, PT, DSc** is an Assistant Professor at the UW-Madison Physical Therapy program. Her research utilizes Tai Chi for fall prevention, pain management and health promotion. Clinically, she uses a wide array of mind-body therapies to promote optimal aging and wellness.

**Kutasha Silva** is a cellist, vocalist and experiential educator from Vieques, Puerto Rico. She is pursuing a Doctorate in Curriculum and Instruction at the University of Illinois and is a freelance musician with the Champaign-Urbana Symphony, Tango Bandleon Orchestra and Musical Theatre productions. (27)

## Workshop & Recitals Profiles

**Leslie D. Judd** is a composer, arranger, music engraver, and more. She also serves as treasurer on the Board of Directions of WIA/NWMF. Leslie has long been committed to providing commissions and performance opportunities for women composers and has produced the orchestral works and musicals at NWMF for many years. Leslie worked with Kay Gardner to co-found the New England Women's Symphony in Boston in the early 70's. CDs of her musical compositions can be found at the Studio L7 booth.

**Louise Brill** founded and has directed with her partner, Mary Donnelly, the Vermont Women's Round Sing for 17 years. Connect with others by singing rounds together. Fun and instant harmony! You don't have to read sheet music, just like to sing with others. Sheet music available. All abilities are welcome.

**Marie Sienkowski and Laura Smith** currently live with and support three felines, and over the last 25 years have humbly served five others. Laura has been a full-time cat wrangler for 10 years, and has earned the honorary title of FUD MAMA. Marie attempts to hold down a work from home job under the close supervision of a fluffy ginger boy who regularly makes appearances on her video conference calls and likes to lay across her forearms as she tries to use the keyboard.

**Marsha Wood and Karen Kirschke** are both recently retired and ready to travel. They both retired from the human services field and are hoping to network with others about where, when and how to spend retirement dollars.

**Mary Lokers**, founder of the Indianapolis Religious Recovery group, has an extensive professional career as a family systems therapist, licensed social worker, schoolteacher, national sales manager, wellness consultant, certified life coach, foot reflexologist and Level II EFT practitioner. She is the author of thought-provoking spiritual workbooks and enjoys leading workshops and conducting individual reflexology sessions while at various women's festivals. Once a native Michigander, she now calls Bloomington, Indiana home.

**Melodie Griffis** has performed in multiple musical groups in the US and internationally, and has appeared several times at NWMF, including with Big Bad Gina and the orchestra for *Babe! An Olympian Musical*. She is a faculty member at the University of Arkansas in the Department of Sociology and Criminal Justice and loves teaching young people about the continuing struggle for social change. Melodie also teaches guitar and performs with various ensembles.

**Nadene Johnson** holds a Doctorate of Naturopathic Medicine from NUHS in Chicago and a Masters in Acupuncture. She brings a wealth of knowledge, wide-ranging curiosity, and empathy for women's health.

**Nancy Vedder-Shults, Ph.D.**, a Wisdom Keeper of the Goddess Spirituality Movement, is the author of *The World is Your Oracle: Divinatory Practices for Tapping Your Inner Wisdom* (Fair Winds Press, 2017), which includes 40 techniques for out-of-the-box thinking.

**Pam Jacobson** is a Restorative Exercise Specialist--Certified Personal Trainer who has great passion for increasing health through natural restorative movement. She has practiced and taught a wide variety of movement arts for over 35 years and loves to share her knowledge with others.

**Peggy Patty** is a Reiki Master and a Tuning Fork practitioner. She has facilitated monthly drum circles and Crystal Bowl Meditations in central Illinois for 15 years. Peggy presents workshops on the healing vibrational effects of Sound at [EarthBeat3@wildblue.net](mailto:EarthBeat3@wildblue.net).

**Phyllis Lau** has helped facilitate healing vibrational Sound Baths in central Illinois for over six years using flutes, drums, etc. She volunteers at the Simmons Cancer Center providing Reiki to patients. She has helped organize drum performances at the local Pridefest.

**Rain Gaia Foster** is a member of the Red Tent Clan of Dianic priestesses, dedicated to serving the Goddess and empowering Her womyn

**Rani Biffle-Quimba** attended her first ZUMBA® class in February 2010 since she has always loved music and dance and wanted to try a group fitness program that integrated both to diversify her workout. The sheer FUN, stress relief, and social experience of doing ZUMBA® has hooked her ever since. She received her ZUMBA® instructor certification in June 2011 and in Aqua ZUMBA® in February 2012. Rani loves teaching ZUMBA® and Aqua ZUMBA® classes since every class feels like a party. You don't even need to know how to dance. Just move your body and follow her lead. Come try it, you will have a blast!

**Rose Casey** is a member of the Red Tent Clan of Dianic priestesses, dedicated to serving the Goddess and empowering Her womyn

**Ruth Debra** is a lifelong activist and co-founder of several progressive women's organizations, including the L-Fund, and a shelter for Battered Women. She has served on numerous boards and has won several

awards for Community Service and working for equality. She has been on OLOC's National Steering Committee for almost 13 years and is also OLOC's Logistics coordinatorcommunity coordinator of community service.

**Sally Jeux LCSW** is an ordained Priestess of RCGI. Therapist, Ritualist, Feminist and Priestess of The Wheel, Sally uses her creative energy to write liturgy, craft altars & walk the healing path with children from hard places. Sally lives a blessed life with her delicious partner Boye.

**Sara Karon** lost her beloved Catherine Odette in 2012, after nearly 30 years of loving partnership. Her work as coordinator of the Room of Remembrance is done in honor of that relationship and in continuance of their shared commitment to building community.

**Shelley Graff** is a longtime singer/songwriter/facilitator who travels the country sharing Singing In Sacred Circles/performances with other women. Stop by Goldenrod to check out Shelley's three CDs. [shelleysg.com](http://shelleysg.com) FB: [shelleygraffmusic](https://www.facebook.com/shelleygraffmusic)

**Suzanne Gray** is interested in working to create housing options for lesbians as we age, and moderates <https://facebook.com/groups/lezcohouse/>.

**Tere Parsley Starnes** is a queer astrologer living in Minneapolis. Tere has been consulting, teaching, and writing about astrology since 1997. They write a daily forecast, "Follow the Moon," that can be found on Patreon. Find out more at [www.starsdanceastrology.com](http://www.starsdanceastrology.com). (they, them, their)

**Thistle Pettersen** is an environmentalist, radio show producer for Women's Liberation Radio News (WLRN), singer/songwriter and performer living in Madison, WI. She has been the object of brutal campaigns of public humiliation, ostracizing and abuse in her town due to holding feminist views and acting on them.

**Toni Armstrong Jr.** has decades of effective experience in women's music and lesbian community building. She's been a concert producer, musician, festival photographer, publisher (*HOT WIRE* magazine), GLSEN youth leadership director, and founder of BLAST (Bi, Lesbian, and Straight Together) Women of the Palm Beaches.

.....  
• **Live Action at the Live Auction** •  
• Many of our artists will have special •  
• items up for auction. They will be •  
• there to help raise the bids on their •  
• items. You don't want to miss the fun. •  
• .....  
.....



## **The Jane Schliessman Award for Outstanding Contributions to Women's Music**

Jean Schliessman, a native of Racine, Wisconsin, attended the I.U. School of Law in Bloomington, IN. After graduation, she made Bloomington her home and worked as an attorney for the Legal Services Organization and in private practice. She specialized in women's issues and domestic relations. Her interests revolved around the arts and included creative writing and her love for women's music. She was involved in the first group of 13 women who revived the NWMF in Bloomington in 1982.

Jane was committed to peace and social change and spent time at the Seneca Women's Encampment for a Future of Peace and Justice (known as Peace Camp), even picnicking atop a buried nuclear warhead. Jane was 35 when she died in 1986 of colon cancer.

## **The 2019 Jane Schliessman Award for Outstanding Contributions to Women's Music is presented to Mary Byrne.**

Mary Byrne caught the women's music bug in 1976 when she attended her first National Women's Music Festival and the first Michigan Womyn's Music Festival. At NWMF she attended impromptu workshops where women from across the country met and discussed the many aspects of producing concerts from expanding audiences to deciphering a tech rider. She remembers, "These meetings fed all of our souls, exciting us to go back to our hometowns and produce concerts." Mary's first concert was Cassie Culver in 1977. She opened Labyris, a women's nightclub, in 1978 where over the next five years she produced more than 150 concerts by local and nationally-known women performers. Mary spurred the renewal of NWMF in 1982 and was the festival producer for 16 additional years. Subsequently, she was the co-owner of an LGBT bookstore in Indianapolis and the executive director of Indiana Youth Group, a non-profit agency serving LGBTQ youth.

## **The Jeanine C. Rae Award for the Advancement of Women's Culture**

Jeanine C. Rae was a guiding light to many women's journeys during the second wave feminist movement in the 1970s and early '80s. An ordained minister, psychotherapist, political activist, and the mother of three children, Jeanine touched the lives of innumerable women throughout her short lifetime.

She was a co-founder and co-owner of The Women's Touch, Indianapolis' first women's bookstore and counseling center, in 1976. The Woman's Touch was the nucleus of a community that then created Woman Space newspaper, the first area hotline for women, feminist worship services, WomanShine Theatre, concert productions, and more. She was one of the midwives to the rebirth of NWMF during its move from Champaign, Illinois, to Bloomington. Her spirit continues to nurture the soul of this festival.

## **The 2019 Jeanine C. Rae Award for the Advancement of Women's Culture is presented to Esther Fuller and Rae Baskin.**

Esther Fuller knew from a young age that she was a lesbian, long before it was safe to be out of the closet except among friends. As with many lesbians of her generation, the need for safety shaped her life. The National Women's Music Festival was one of the few gatherings where she felt safe to be her most authentic self. Rae Baskin's path was completely different. She had never been attracted to a woman, let alone in love with one. Then along came Esther in 1990 and within a few months they were inseparable, in love, and living together. And Rae didn't care who knew it.

As their relationship deepened and the years rolled by, they started feeling the vulnerabilities of aging. Because the law provided no rights to them vis-à-vis each other, they created every document they could to protect each other. In 2013 after Edie Windsor's Supreme Court win invalidating the federal Defense of Marriage Act, Rae called Lambda Legal seeking a lawyer to explain the ins and outs of legal marriage in Indiana, where it was not valid. A few months later Lambda asked if she and Esther would be willing to be named plaintiffs in a court case challenging Indiana's prohibition. Rae was sure Esther would not want to become a public figurehead. But Esther amazed her and said "yes." When asked why, Esther explained that it was because she could, while so many others could not. She was retired so couldn't be fired. She had no children to be taken away. She owned her house so couldn't be evicted.

Esther and Rae's role was to get their pictures taken, talk to reporters, meet donors and tell their story. Their real role was to educate and to show that they were relentlessly ordinary, the same as every other couple. And spoiler alert—in 2014 they won in both District and Circuit Court. On September 8, 2015 they married. When Esther died last August, they had been together over 28 years and legally for married nearly three years.

## **The Women in the Arts Kristin Lems Social Change through Music Award**

is presented to a women's music artist who has worked to achieve a positive change in society and whose continued actions have profoundly impacted a social movement through the use of music. Kristen Lems started the National Women's Music Festival at the University of Illinois out of her determination to make women's voices heard. She is still working for women's rights, safe energy, peace, racial equality, and other pressing causes.

## **The 2019 Kristin Lems Social Change Award is presented to World On Fire.**

World On Fire uses the arts for social awareness and change. It is a poetry-music-theater piece about climate change and related challenges. The performance event uses voice, language, rhythm, melody and imagination to create a space where audiences can celebrate all existence, mourn what has been lost, and discover how we might transcend our opinions, our sense of powerlessness, and our fears. Under the direction of Corey Fischer, the artists are Barbara Borden, Naomi Newman, and Susanne DiVincenzo.

**Barbara Borden** is deeply moved by the transformative and unifying possibilities that drumming provides as it crosses all borders and boundaries to connect audiences and participants heart to heart, beat by beat. She began drumming at age ten. She is a composer and recording artist (*Beauty in the Beat, All Hearts Beating*); performs solo and in collaboration with other musicians and artists, including the all-women's jazz quintet, Alive!; and teaches lessons and workshops. Barbara is the subject of the acclaimed documentary, *Keeper of the Beat: A Woman's Journey Into the Heart of Drumming*, which was recently screened on national PBS stations.

**Naomi Newman** fell in love with the theater at the Yiddish playhouse she attended with her parents as a child in Detroit. She has been a concert singer, playwright, director, actor, and psychotherapist. She founded A Traveling Jewish Theater in San Francisco and has devoted 25 years to its success. An accomplished actress in many styles, Naomi has performed her one-woman plays *Rose, Model Apartment*, and *Snake Talk: Urgent Messages from the Mother*, as well as *Fall Down Get Up*, a work with a feminist message about resilience in the face of aging and injustice in which she plays a



dozen characters. For her contributions to the cultural life in the Bay Area she has received a Tikkun Award, the Mill Valley Creative Achievement Award, and Theatre Bay Area's Community Leadership Award. An oral history of her life and career is now part of the Legacy Collection of The San Francisco Performing Arts Museum.

**Susanne DiVincenzo** is a founding member of Alive!, the women's jazz quintet. In 1975 she established Wonder Woman Electric, an all-women electrical contracting company in the Bay Area. For several years she was concurrently touring with Alive! and earning her living as an electrician. For 20 years she lived in New Jersey, playing in the Atlantic City casinos for Andrea Bocelli, Tony Bennett, Natalie Cole, Sarah Brightman and others. She was the principal cellist of the Jersey Shore Pops Orchestra and the Assistant Director of the Atlantic Youth Orchestra. For the last year she has been back in the Bay Area freelancing. She has been teaching at the Girls' Jazz and Blues Camp at the California Jazz Conservatory in Berkeley and with the ELM Program (Enriching Lives Through Music) in San Rafael as well as teaching private lessons on cello and bass. Suzanne has been a part of the orchestral programming at NWMF for several years.

## The Ruth Ann Rowan Believer Award

Ruth Rowan was a shero of National Women's Music Festival. She is remembered for her generous heart and enthusiasm. Ruth was dedicated to keeping NWMF thriving for years to come. Marsha remembers Ruth at the festival, "Sometimes she was so tired she could not move and I would think 'Why is she working so hard?' Then I would see her on stage or in the merchant area talking to women, welcoming woman, and she was happily in her element. She loved this festival and did everything in her power to keep it going."

**Ruth was a Believer!**

## The 2019 Ruth Ann Rowan Believer Award is presented to Crys Matthews.

Crys Matthews is a powerful lyricist whose songs of compassionate dissent reflect her lived experience as what she lightheartedly calls "the poster-child for intersectionality."

In August 2017, she simultaneously released both a new full-length album, *The Imagineers* and an EP, *Battle Hymn For An Army Of Lovers*. In her TEDTalk about difficult conversations called "Sing, Don't

Shout—An Alternative Approach" Crys spoke about being born and raised in a small town in southeastern North Carolina by an A.M.E. preacher, and how she witnessed the power of music from an early age.

A former drum major and classically-trained clarinetist turned folk singer, Crys uses her voice to answer Dr. Martin Luther King's call to be "a drum major for justice." She is singing out in the hopes of inspiring listeners to have more of those difficult conversations. "Now is the time for a revolutionary love," Crys says, "a love so profound that it bankrupts organizations who would put their profits before the safety of our children and our citizens, builds bridges to unite us instead of walls to divide us, and changes hearts instead of minds."

## The Sarah Dwyer WIA Board of Directors' Special Appreciation Award

Sarah Dwyer began volunteering at the festival as a massage therapist for workers and eventually served as board president through several years of change and growth. An occupational therapist by profession, she was committed to social justice, especially for the disabled. No matter what her work with NWMF entailed, she served with deep commitment, down-to-earth practicality, and laughter.

## The 2019 Sarah Dwyer WIA Board of Directors Special Appreciation Award is presented to Gail Fairfield, Sarah Gillespie, and Terri Worman.

**Gail Fairfield** first encountered lesbian/women's music and culture in 1975, embraced it whole-heartedly, and never looked back. She participated in women's events for years on the West Coast where she built a private practice as an astrologer and tarot interpreter and published *Choice Centered Tarot and Choice Centered Astrology*. In 1990, Gail moved to Bloomington, Indiana, where she discovered the National Women's Music Festival. She immediately began participating by offering workshops through the spirituality series. Then the Festival moved and her life got complicated. She became deeply involved with her work at Indiana University, where she built a state-wide academic life-coaching program. Fast forward to 2016, a simpler life, and friends who jump-started her return to the Festival. Two years later, wanting to give back to the community, she volunteered to manage registration. Gail worked steadily

for 10 months to create a new computerized registration system, design the work flow, make registration even more welcoming, and gather a volunteer staff. Retired now (although still active in her private practice), Gail anticipates years of engagement in this village of women.

**Sarah Gillespie** is a French horn player who has been working with the festival orchestra and Women Composers Series since 2012, when she joined the orchestra for Kay Gardner's *A Rainbow Path*. She also helps behind the scenes with preparation for the festival recital series. Sarah was recently named French Horn Player of the Year by the Madison Area Music Association. Featured artist Valerie Coleman has called her "wild woman on a horn." Sarah plays with the LaCrosse Symphony Orchestra and teaches privately.

She says, "Since realizing that the majority of the music I performed in high school and college band and orchestra was composed by men, I've programmed works by women composers in nearly every recital I've performed. Sadly, most orchestras largely ignore orchestral works by women. The Festival gives me a place to perform recital pieces, chamber music, and large orchestral works not only written by women, but also conducted and performed by women. Promoting women composers and performers is a goal that the NWMF upholds and I'm thankful for the opportunity to be a part of this festival!"

**Terri Worman** sees her volunteer onsite workshop coordinator job as a wonderful juxtaposition of her musical self and her experience as an event coordinator with AARP Illinois for over 20 years. In the months leading up to the festival, she loves working with board member and day program coordinator Mary Spillane to plot the magic of the workshop schedule, known as the "color-coded monster grid". Then during the festival, Terri and her small but amazing volunteer crew keep track of thirteen conference rooms and over 90 workshops, events, and music rehearsals. Terri and her team are the wizards behind presentation technology assistance, room setup changeovers every hour, and many other details that ensure that presenters and attendees have the best possible experience. Every year she says, "Next year I AM going to wear that step counter to see



# Rainbow Realty

Vieques Island, Puerto Rico

## VIEQUES ISLAND PUERTO RICO

**Womyn Friendly!**

**Lesbian Welcoming!**

**Amazing Tropical Paradise  
for vacations..full Time!**

**VACATION RENTALS  
REAL ESTATE SALES  
CONSULTING SERVICES  
LONG TERM - SEASONAL  
COMMERCIAL RENTALS TOO!!!**

**Lin Wetherby, Owner/Broker #7941**

**787 380 4990**

**RainbowRealty@Hotmail.com**

**ViequesrainbowRealty.com**

## 2019 Women in the Arts Awards

just how many steps I accumulate over these festival days" If you see her, ask to see the step counter! Terri's greatest joy is working with all of the coordinators and volunteers who collaborate with Day Programming to create a one-of-a-kind festival for women and the music we love.

### **The 2019 Women in the Arts Technical Skills Award is presented to Ronda Jean.**

Women from Minnesota are tough. RJ is no exception. After braving the cold in her early life, she moved to the Badlands to try her hand at ranching. For RJ, ranching meant she rode horses down steep mountains at dawn to rescue calves from frozen rivers, held her own in a cowboys' world, and rounded up hundreds of head of cattle. Taking her love of horses to the next level, she rode a 100 mile endurance race. After moving to Arkansas, RJ began to round up lesbians instead of cattle. She became the road manager for the award winning, all-Lesbian ensemble, Big Bad Gina, touring from coast to coast. RJ has worked crew at countless festivals through the years but sees NWMF as her home festival where she learned her crew technique from Linda Wilson. Linda describes RJ as a tireless worker, great problem solver, and caring person. This is RJ's 10th consecutive year at NWMF and her 9th working crew on the SheRocks stage. RJ currently runs sound and plays bass for her wife, Renée Janski. They have four children and one grandbaby and reside in the paradise of the Ozark Mountains of Arkansas.

## Staying at the Marriott Madison West Hotel?

The number of sleeping rooms used by the Festival attendees plays a crucial role in setting the costs to both you and the Festival. The more rooms used by festival-goers, the cheaper the rooms. But if we overestimate our room needs, we pay a penalty. Help us know the actual number of rooms used by women at the Festival this year.

Tell us the following:

1. Your Marriott hotel room number
2. Your check-in date and how many nights you're staying in the Marriott Madison West
3. The names of any roommates sharing your room at the Marriott.

If you didn't tell us these 3 things when you checked in, please stop by Festival Registration to let us know. If your plans change mid-Festival (stay longer, stay shorter, change roommates, etc) please let us know.

# Hello, neighbor.

We're proud to be part of this community and work to understand the unique needs and concerns of the folks who live here. Whether you're coming into our Fidelity Investor Center to meet with an advisor for help with a financial plan, or to attend one of our seminars, our goal is to help ensure that you leave feeling prepared and confident about what's next.

## The team at the Madison Investor Center

8235 Greenway Boulevard  
Middleton, WI 53562  
**800.482.0271**

## The team at the Schaumburg Investor Center

1572 East Golf Road  
Schaumburg, IL 60173  
**800.521.5650**



Investing involves risk, including risk of loss.

This information is intended to be educational and is not tailored to the investment needs of any specific investor.

Fidelity Brokerage Services LLC, Member NYSE, SIPC, 900 Salem Street, Smithfield, RI 02917

© 2019 FMR LLC. All rights reserved. 876732.2.1

## *You are invited to Dine with an Artist*

This special experience in the Marriott Private Dining Room features time with a festival artist, a unique menu, and a more intimate setting than the Artist Breakfast. Seating is limited. Buy your meal at registration.



### Salad

Mesclun Greens, Romaine, Sunflower Seeds, Cranberries, and Goat Cheese with Balsamic Vinaigrette

### Entrees

Mushroom Vegetable Kabobs, Quinoa Almond Pilaf, Asparagus

Seared Airline Chicken Breast, Cilantro Lime Rice, Asparagus, Achiote Cream

Grilled Sirloin Steak, Fingerling Potatoes, Oven Roasted Tomato, Asparagus, Red Wine Demi-Glace

### Dessert

Door County Cherry Cheesecake

### Beverages

Assorted soda, fruit juice, iced tea, coffee, decaffeinated coffee, or Tazo tea selections

DINE WITH NAN WASHBURN  
AND VALERIE COLEMAN



THURSDAY - JULY 4TH

DINE WITH KAREN WILLIAMS  
AND GAYE ADEGBALOLA



FRIDAY, JULY 5TH

DINE WITH LISA VOGEL  
AND ELIVRA KURT



SATURDAY, JULY 6TH

SHERRIE MARICLE, SUEDE  
& DIVA MEMBERS



SUNDAY, JULY 7TH



## WIA/NWMF Contributors

We value everyone's currency of exchange, be it time, expertise, or money. The Festival exists and persists because of everyone who attends and contributes in any way. We are grateful for your support.

Adlai Neubauer	Corrinne Farner	Jean Block	Lynn O'Dell	Retts Scauzillo
Alice Gomez	Crys Matthews	Jeanie Moulder	Marcia Phillips	Rhiannon
Alice McKeage	Cynthia Huelsmann	Jeanne Simonoff	Margaret Keefe	Richard Oliver
Amanda O'Brien	Cynthia Rose	Jen Kiper	Margarette Shelton	Robert Sahr
Amie L. Rankin	Dale Mabry	Jennifer Weber	Margy Leshner	Robin Matusow
Amy Horowitz	Dar Bevelhymmer	Jerry Ziertman	Maria S. Nasca	Roots Chocolate
Angela Brinkele	Dawn Smith	Jill Zimmerman	Marianne Tromp	Rosemary Lundell
Angela Leazer	Dayle Roberts	Jo Ann Dale	Marie Cartier	Ruth Berman
Ann Dey	Deb Andersen	Joan Collins	Marilyn Krump	Ruth Clark & Lorraine Edwards
Ann Morris	Deborah Lane	Joanne Lemon	Marla Marquardt	Ruth Debra
Anne Caldwell	Debra Johnson	John Conklin	Marsha Acheson	Ruth Eleanor Vacin
Annemarie Serra	Deidre McCalla	Johnda Boyce	Marty Spiegel	Sally Fussell
Annette Billings	Denise Dedman	Jorian Lee	Mary Byrne	Sandra Appleby
Annie Luke	Denise Hall	Joy Baker	Mary L. Crocker	Sandra Glorfield
Anonymous 28	Denise Phillips	Joy Zimmerman	Mary O'Donnell	Sandy Cockerham
Arden Eversmeyer	Diana Stuckey	Joyce Maurer	Mary Spillane & Judy Carroll	Sarah Baker
Ashland Miller	Diana Williams	Judy Ireland	Mary Sue Horan	Sarita Karon
Aubra Barbara Ann Rues	Diane Litke	Judy Stanley	Mary Watkins	Sea Breeze Manor
Audra Sergal	Dickey's BBQ Pit	Julia Kleppin	Mary Zadrozny	Shannon Obendorf
Audrey Patrick	Donna Farber	Kara Barnard	Mary Zee Giving Fund	Sharon Katz
Barb Zurn & Sue Arnold	Donna Valle	Karen Cayer	Maryann Giacchino	Sharon Williams
Barbara Bitters	Dorinda Costa	Karen McCorkindale Baum	Maryjo Hackett	Shawna Langdell
Barbara Kucharczyk	Dorothy Brinkman	Karen Nelson	Maureen Bernard	Shellee Botts
Barbara Lea	Edi Shifrin	Karen Reass	Melanie DeMore	Shelley Graff
Barbara Markay	Elaine Donnoe	Karen Sandhaas	Melinda Spitzer	Sherrie Wilson Stanley
Barbara Rene Rock	Elizabeth A. Colburn	Karleen Kos	Melissa Keyes	Sheryl Mase
Barbara Wilmoth	Elizabeth Petty	Katelyn Macri	Melodie Griffiths	Skippy Montrose
Barbie Markay	Ellen Bonjorno	Kathy Benton	Michael Leach	Sonja Pelli
Beck Forth	Ellen Turney	Kay Ediger	Michelle Denley	Stephanie Hallisy
Beth Denisch	Eric Borchert	Kay Verser Forrest	Michelle Mormul	Sue Ellen Myers
Beth Forth	Esther Jackson	Kellyann Conway	Michelle Walsh	Sue Fink
Betsy Poling	Esther Markus	Kim Blackhorse	Micki Stiller	Sue Goodwoman
Bettie Owen	Etas Carria	Kiya Heartwood	Midge Stocker	Sue Peterson
Betty Sze	Eugenia Fernandez	Kris Frayne	Mimi Gonzalez	Susan A. Gore
Bim Burns	Gail Fairfield	La Mott	Nan Brooks	Susan Burton
Boden Lyon	Gale Charlotte	LaGenia Bailey	Nan Washburn	Susan Denis
Bonni Maxwell	Galveston Beach	Laura Weiskamp	Nancy Banks	Susan Higgins
Bonnie Morris	Gaye Adegbalola	Laurie Fuchs	Nancy E. Schraufnagel	Susan L. Burton
Bonnie Zwiebel	Geoffrey S. Lapin	Leslie D. Judd	Nancy Scott	Susan Morrissey
Brenda Corbello	Ginger Doss	Leslie Holbrook	Nancy Seasi Ober	Susanne DiVincenzo
Cam Snyder	Gini Ingram	Leslie Liszak & Jana Schroeder	Nancy Vaughn	Suzanne de Bronkart
Camilla Zuehlke	Gloria Krysiak	Lillian Mollica	Nancy Yackle	Suzanne Keller
Candy Feldt	Herman Kenton Griffin	Linda Bernhard	Naomi Ruth Cobb	Talia Shafir
Caren Prideaux	Higlands Inn	Linda W. Betzer - in Loving Memory of Candace A. Prebil	Natasha Muniz	Tammy Lynne Hall- Hawkins
Carla Carter	Hilda J. Richey	Linda Gleason	Nedra Johnson	Tara Shannon
Carol Bradley	Holly Loveland	Linda J Power	Pam Xami Hall	Terri Worman
Carol Branson	Houston Family Foundation	Linda Jo Stamper	Pamela Hess	Toni Armstrong Jr
Carol Vitelli	In Memory of Candace Prebi	Linda N. Lily-Gleason	Pat Christie & Marcia Gallas	Tracy Gary
Cate Larsen	In Memory of Charlotte Avery	Linda Owen	Pat Funderburg	Uli Schneider
Catherine Swilley	In Memory of Esther Fuller	Linda Schram	Patricia Carland	Ursula Roma
Chelsey Danielle	Ingrid Moser	Linda Thrush	Patricia Dallam	Vada Woods Living Trust
Cheryl Hruby	Irene Young	Linda Todd	Patricia Eagon	Victoria O. Smith
Cheryl Peters	Ivonne Piercy	Linda Wilson	Patti Gocho	Wahru Cleveland
Chris Collier	Jacqui Sabo	Lisa Koch	Paula Berg	Wendy Love Edge
Christina Lord	Jamie Anderson	Lisa Schulman Larsen	Paula Jellis	Willie Sordillo
Christine Hilbert	Jan Gruner	Lisa Vogel	Peg Keefe	Yvonne Welbon
Christine Violet	Jane Cothron	Lisy Harmon	Prairie Nyx	
Cindy Bear	Jane Winslow	Liz Coburn	Prosisters	
Cindy Clardy	Janelle Burdell	Lois Reborne	Rachel Mc Klveen	
Cindy Houston & Rete Carie	Janice Goodrich	Lori D. Golden	Rae Baskin	
Connie Garry	Janice Martinez	Lucy Tremblay	Rebecca Merola	
Connie Webb	Janice Rickert & Carolyn VandeWiele	Lydia Low	Renée Janski	
Corky M. Dunsmore	Janis Longhorn			

A record number of Contributors.

*Thank You!*  
(33)

## 1 – Craft Brewed Suds and Snow Global Images

Craft Brewed Suds brings you awesome handmade soaps, bath treats, lip balm, and lotion bars that will have you bubbling over with the giggles. Pun intended, of course! Snow Global Images - Travel, landscape, and architecture photography from the United States and beyond. Vibrant, luminous, inspiring images printed on metal.  
craftbrewedsuds.com snowglobalimages.com  
Lindsay Snow  
craftysuds@gmail.com

## 2 – Venus Rising

One of a kind, ethnic, Pagan, Goddess themed stone and glass jewelry.  
Lisa Larsen  
lisalarsenjewelry.com

## 3 – Gentle Journey Healing Arts

Jude Christensen has been practicing therapeutic massage since 2000. She began studying John Barnes Myofascial Release (MFR) in 2010 and achieved expert status in 2015. Jude is both nationally certified and licensed as a massage therapist in the state of Wisconsin.  
Jude Christensen  
judechristensen.amtmembers.com/

## 4 – Untethered Sole

Foot Reflexology and chair massage.  
Mary Lokers  
untethered-sole.abmp.com/

## 5 – Studio L7—Leslie D. Judd, Composer

Offering improvisational CDs, composing, arrangements, orchestrations, lead sheets, engraving, and copy work. Specialty L7 clocks. Also representing the women of the NWMF Orchestra.  
Leslie D. Judd  
lesliedjuddcomposer.com  
lesliedjuddcomposer@gmail.com

## 6 – Alaskans Art-n-Around (previously Spinners)

We travel in our RV and sell a wide variety of unique one of kind pieces of art. We sell glass items, beaded items, crystals & stones, mammoth ivory & carved bone, dream/sun catchers, jewelry, and laser cut metal wind spinners.  
Ruth Olsen  
alaskansartnaround.com

## 7 – Moon Goddess Creations

One of a kind, handmade silver jewelry with healing crystals, chakra gemstones and infused with loving energy.

Cynthia Ricks  
Cynthia.s.ricks@gmail.com

## 8 – Lesbian Connection

Lesbian Connection — the free worldwide forum of news and ideas for, by and about lesbians.  
Lisy Harmon  
LC@LConline.org

## 9 – Goldenrod Music

Women's music CDs, DVDs, books and cool merch by the festival artists.  
Susan Frazier & MJ Stephenson  
goldenrod.com

## 10 – National Women's Music Festival Merchandise

NWMF festival shirts, messenger bags, jackets, magnets, stickers – all the Festival swag you need and can't live without, while supporting the greatest and longest running Women's Music Festival in the World! (YES!) Carol Vitelli – Festiwear Coordinator with 2019 Festiwear staff: Annemarie Serra, Lyn Davis, Marge Keller, Tina Horth, Jen Sims, Nan Maloy, Megan Calders.  
nwmf.info

## 11 – Trillium Organics

Lifting Spirits Since 1994 — Trillium Organics body polish, oil, butter and perfume.  
Karen Ciesar  
trilliumorganics.com

## 12 – Ohio Lesbian Festival

Come join us for the 30th anniversary Ohio Lesbian Festival!! Sept 19-22, 2019  
Missy Conley  
ohiolba.org

## 13 – Twin Star Designs

Unique hand-dyed, hand-painted natural fiber clothing from short and long sleeve button-down shirts to cotton tees, bamboo socks, silk scarves and rayon sarongs, plus some polo-style shirts and other surprise items from small to 5xl.  
Esyule Gamache  
Facebook Twinstar Designs

## 14 – Recovery Chiropractic

We do Activator Methods Protocol and Logan Basic Technique. Both are light force and energetic. We also do Polarity/Energy Balancing.  
Dr. Sara Singh  
drsara722@gmail.com

## 15 – Green Goat Apothecary

Neat, clean, not overwhelming, lovely products

for healthy skin.  
Kathleen O'Laughlin  
greengoatproducts.com

## 16 – Jiva Jewels and Accessories

Comfortable and unique clothing for the fun loving Amazon women.  
Rosa Campos  
Jivajewels@gmail.com

## 17 – OUT!wear Pridewear & Accessories

25 years of serving our community! (Since 1994) – Sizes 6M to 6X – Quality Custom Pridewear, apparel and promotional products for your group or event.  
outwear.com & msndesigngroup.com  
Michelle Denley, Po Wood  
yomaria@outwear.com

## 18 – Skyriders Jewellery

One of a kind fabricated jewelry creations using gold and silver and exquisite stones for the purpose of empowerment and healing.  
Nadine Zenobi  
skyridersjewelry.com

## 19 – Sewing in Circles

Textile designs for fun and function.  
Rose Halik, Owner/Designer  
sewingincircles.com

## 20 – Roots Chocolates

International award-winning chocolates made on a 4th generation farm.  
Lisa Nelson  
rootschocolates.com

## 21 – Peace and Pride

A progressive boutique with rainbow silver jewelry and feminist issue oriented t-shirts  
Ruth Debra  
Ruthdebra@icloud.com  
EBay.com/str/peaceandpride

## 22 – Castle Art

A relaxing atmosphere to sit and be drawn on with henna  
Amy Wilde  
castleart.com

## 23 – Lola's Butters & Balms

Fair Trade African shea butter and coconut oil products: Body Butter, Lip Balm, Belly Balm, and Coffee Eye Cream. All natural skin care fit for a queen!  
Lolasbutters.com  
Denise Berg



## Marketplace

### 24 – Willow Moon

Artwork, prints, notecards, shower curtains and possible other items with my designs.  
Cedar Kindy  
cedarkindy.com

### 25 – Designs in Wire

Beautifully hand-crafted wire jewelry: bracelets, rings, earrings, necklaces, charms, pendants, and sun catchers.  
Dorie Hodal  
dorie.hodal@gmail.com  
630-479-1341

### 26 – Broughton Music & Art Center

We are a women-started and cultivated music product and music lesson business. We have two permanent locations serving both the southwestern and southeastern Michigan communities. We offer musical instruments—ukes, guitars, drums—sheet music and accessories at the music festivals we've served.  
Laurie A. Jarski  
broughtonmusiccenter.com

### 27 – Jane Lyon Jewelry

Hand cast zamak jewelry  
Jane Lyon  
janelyon09@gmail.com

### 28 – L2L FRAMILY

Michigan Framily Reunion is a womyn's music festival in the spirit of MWMF. Set in Wayland, MI tree farm, MFR is a gathering of young and old sisters for music, shopping, firepit, workshops, Amazon Acorns, and FRAMILY. Aug. 2-5, 2019. For more tickets, come to the MFR booth!  
Dawn Smith  
michiganframilyreunion.com/

### 29 – Jorjet Harper Crafts

Woman-centric art, handcrafted jewelry, lesbian-themed ornaments and magnets  
Jorjet Harper  
jorjeth@gmail.com

### 30 – Willow Tree Pottery

Wheel-thrown and hand-built pottery.  
Marie Sawall  
willowtreepotteryonline.com

### 31 – Lesbian Natural Resources

A non-profit formed in 1991 to help lesbians and communities form durable legal and financial arrangements.  
Nett Hart  
lesbiannaturalresource.org

### 32 – A Pane in the Glass

Mosaic tables and hangings.  
Genevieve Johnson  
apaneintheglass/facebook.com

### 33 – Amazulu Collections

Amazulu is an eclectic mix of sterling silver wimin-inspired jewelry offering one of a kind fashion forward hats, clothing and accessories.  
Charita Powell  
amazulucollections.com

### 34 – Peace and Prosperity Through Art

The paintings, prints, greeting cards, buttons, patches and T-shirts that celebrate and empower womyn and girls by artist-activist Laura Irene Wayne.  
laurairenewayne.com

**Don't miss  
this great  
film  
showing  
at the  
NATIONAL  
WOMEN'S  
MUSIC  
FESTIVAL**



### ANCHOR AND HOPE

In their mid-30s, Eva and Kat have a fun and carefree simple life in their London canal boat until Eva, inspired by her exceptional mother Germaine presents Kat with an ultimatum: she wants a child. A modern comedy about family starring Oona Chaplin, Natalia Tena and Geraldine Chaplin.

**Also available for streaming at [WolfeOnDemand.com](http://WolfeOnDemand.com)**

*Princess Cyd, Russian Doll, A Date For Mad Mary, Heartland, Liz In September, Parched, Kiss Me, Me Myself and Her, A Perfect Ending, Elena Undone, The Girl King, Tru Love, Loving Annabelle, Reaching For The Moon, Cloudburst, Claire of the Moon, The Gymnast*

*Your trusted community source for lesbian films*



# MARKETPLACE - MICHIGAN ROOM

## Marketplace Hours

Thursday

Open at 5:00 pm

Fri & Sat  
Sunday

10 to 9 PM  
10 to 4

water station

9

Goldenrod  
Music  
Susan Frazier  
MJ Stephenson

8

Lesbian  
Connection  
Lisy Harmon

7

Moon Goddess  
Creations  
Cynthia Ricks

6

Alaskan Art-n-  
Around  
Ruth & Maria  
Olson

5

Studio L7  
Leslie Judd

4

Untethered  
Sole  
Mary Lokers

3

Gentle  
Journey  
Healing Arts  
Jude  
Christensen

2

Venus Rising  
Lisa Larsen

1

Craft Brewed  
Suds & Snow  
Global Images  
Lindsay Snow

10

National Women's Music  
Festival Merchandise

16

Jiva Jewels &  
Accessories  
Rosa Campos

15

Green Goat  
Apothecary  
Kathleen  
O'Laughlin

14

Chiropractor  
Dr. Sara Singh

13

Twin Star  
Design  
Eayule  
Gamache

12

Ohio Lesbian  
Festival  
Missy Conley

11

Trillium  
Organics  
Karen Ciesar

21

Peace and Pride  
Ruth Debra

22

Castle Art  
Amy Wilde

20

Roots  
Chocolate  
Lisa Nelson

23

Lola's Butters  
& Balms  
Denise Berg

19

Sewing in  
Circles  
Rose Hallik

24

Willow Moon  
Cedar KIndy

18

Skyrivers  
Jewelry  
Nadine  
Zenobi

17

OUTwear Pridewear &  
Accessories  
Michelle Denley  
Po Wood

## LIVING ROOM

Open Mic, Jams  
& Storytelling

34

Peace &  
Prosperity Through  
Art  
Laura Wayne

33

Amazulu  
Collections  
Charita Powell

32

Pane in the Glass  
Genevieve  
Johnson

31

Lesbian Natural  
Resources  
Nett Hart

30

Willow Tree  
Pottery  
Marie Sawall

29

Jorjet Harper  
Crafts  
Jorjet Harper

28

L2L FRAMILY  
Dawn Smith

27

Jane Lyon Jewelry  
Jane Lyon

26

Broughton  
Music & Art  
Center  
Laurie Jarsky

25

Designs in Wire  
Dorie Hedal

Water Station

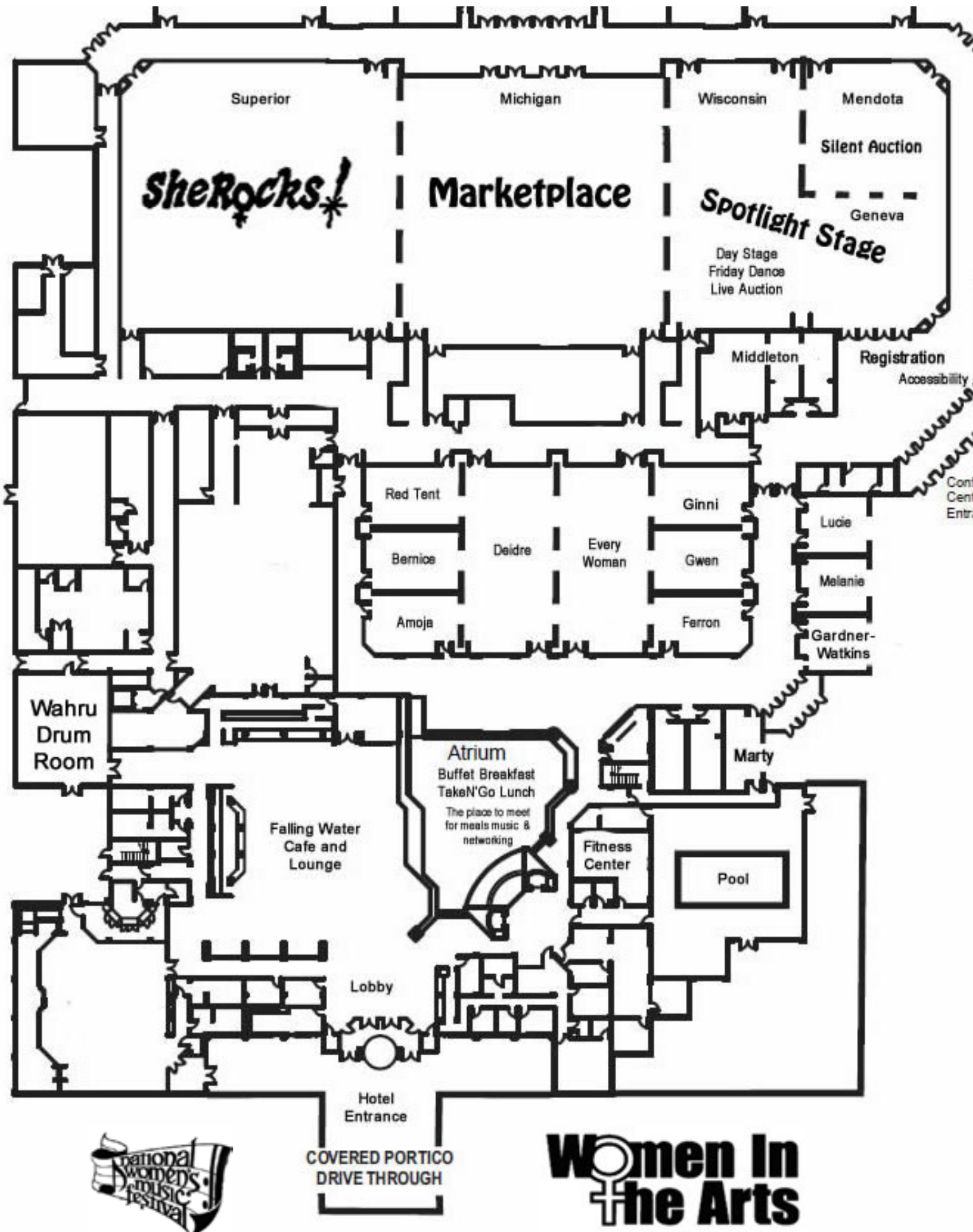
Water Station

Restroom

Restroom

Enter Michigan Room for Marketplace

(Open to the public-no festival pass needed)



**SheRocks!**

**Marketplace**

**Spotlight Stage**

Silent Auction

Geneva

Day Stage  
Friday Dance  
Live Auction

Registration

Accessibility

Cont.  
Cent.  
Entr.

Red Tent

Ginni

Bernice

Deldre

Every  
Woman

Gwen

Amoja

Ferron

Lucie

Melanie

Gardner-  
Watkins

Wahru  
Drum  
Room

**Atrium**

Buffet Breakfast  
TakeN'Go Lunch

The place to meet  
for meals music &  
networking

Falling Water  
Cafe and  
Lounge

Marty

Fitness  
Center

Pool

Lobby

Hotel  
Entrance

COVERED PORTICO  
DRIVE THROUGH



**Women In  
the Arts**

## 2019 NWMF Budget & Revenue

2019 Revenue Projection	Revenue	2019 Expense Budget	Expense
Ticket Sales	\$ 100,000	Artist & Crew Fees	\$ 80,000
Site Box Office Sales	\$ 12,200	Travel	\$ 25,000
Pre-site Contributions/Fundraisers	\$ 40,000	Equipment	\$ 18,000
Site Contributions/Fundraisers	\$ 25,000	Venue Expenses	\$ 48,000
Festival Merchandise	\$ 8,000	Advertising/Marketing	\$ 10,000
Vendor Booth Revenue	\$ 8,000	COGS Merchandise	\$ 5,000
Grants	\$ 5,000	Printing & Graphics	\$ 6,500
		Bank/Charge Fees	\$ 3,000
		Postage, Storage, Insurance	\$ 2,700
<b>Total Projected Revenue</b>	<b>\$ 198,200</b>	<b>Total Expense Budget</b>	<b>\$ 198,200</b>



### Staying in Middleton after the festival?

Go to [visitmiddleton.com/attractions/](http://visitmiddleton.com/attractions/) to find the Farmer's Market, mountain biking, hiking trails, water sports or the Mustard Museum.





# Duneswood



*So near, yet so far.*

231-668-6789 • [Duneswood.com](http://Duneswood.com)

*Duneswood Resort is in the heart of Sleeping Bear Dunes National Lakeshore*

## Gorgeous **Eco-Friendly** Cabin on Lesbian Land



FOR SALE: **NE ALABAMA**  
\$146,900

INFO & PHOTOS:  
[alapine.wordpress.com](http://alapine.wordpress.com)

Contact: Iris or Jan

[irispine19@gmail.com](mailto:irispine19@gmail.com)



## Puna, Hawaii Forrest Lot Cottage

email Chewy at [sharakane@yahoo.com](mailto:sharakane@yahoo.com)

THIS IS MORE THAN JUST A VACATION

# THIS IS OLIVIA

**All-Women All the Time · Dreamy Destinations · Signature Entertainment**

Starting as a women's record label 45 years ago, Olivia has taken women all over the world and our commitment to great entertainment influences everything we do.



# olivia<sup>TM</sup>

THE TRAVEL COMPANY FOR LESBIANS

OLIVIA.COM • (800) 631-6277 | oliviatravel oliviatravels oliviatravel oliviatravel

CST#1009281040